



# INSTALLATION INSTRUCTIONS

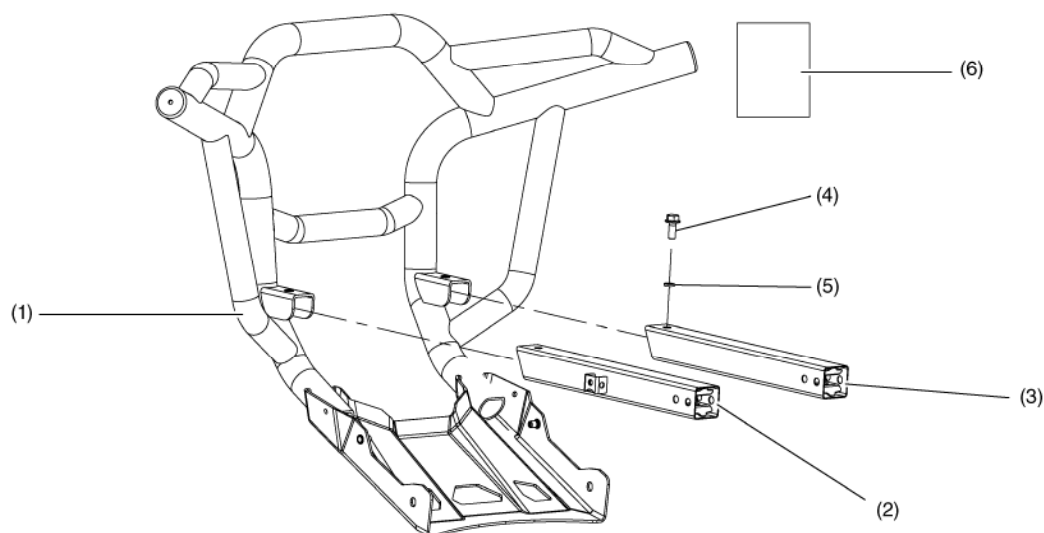
Accessory  
**ALUMINUM FRONT BUMPER**  
P/N OSP80-HL6-A00

Application  
**SXS1000S2X**  
**SXS1000S2R**

Publication No.  
**MII 16561**  
Issue Date  
**February 2019**

**Honda Dealer: Please give a copy of these instructions to your customer.**

## PARTS LIST



No.	Description	Qty
(1)	Front bumper assembly	1
(2)	Left mounting tube	1
(3)	Right mounting tube	1
(4)	12 × 20 mm flange bolt	2
(5)	Spring Lock Washer	2
(6)	Installation Instructions URL	1

## TOOLS REQUIRED

Socket (12 mm)  
Ratchet  
Torque wrench  
Box-end wrench (12 mm)  
5 mm Hex wrench

## TORQUE CHART

Tighten all screws, bolts, and nuts to their specified torque values. Refer to the Service Manual for the torque values of the removed parts.

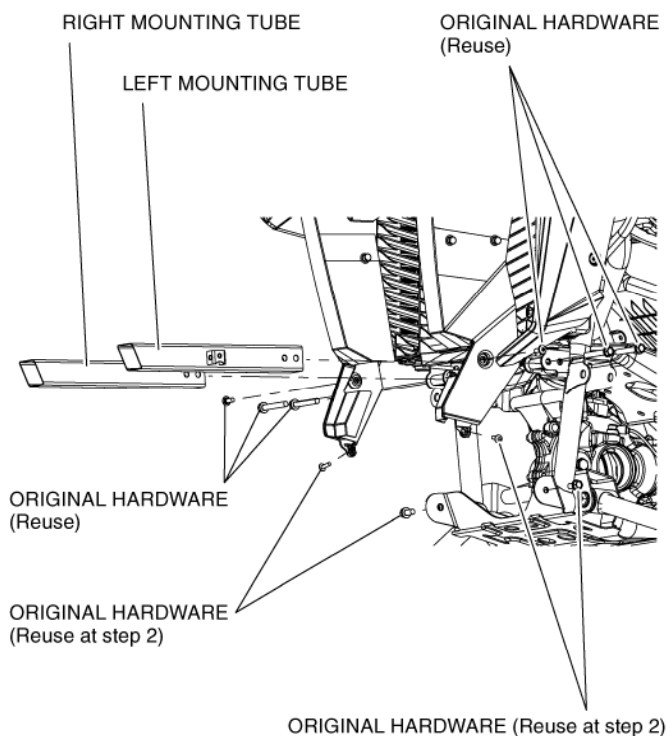
Item	N-m	kgf-m	lbf-ft
12 mm flange bolt	20	2.2	16
5 mm shoulder bolt (Original bolt)	9	0.92	6.5
5 mm socket screw (Original bolt)	4	0.4	2.95

## INSTALLATION

### ⚠ CAUTION

To prevent burns, allow the engine, exhaust system, radiator, etc., to cool before installing the accessory.

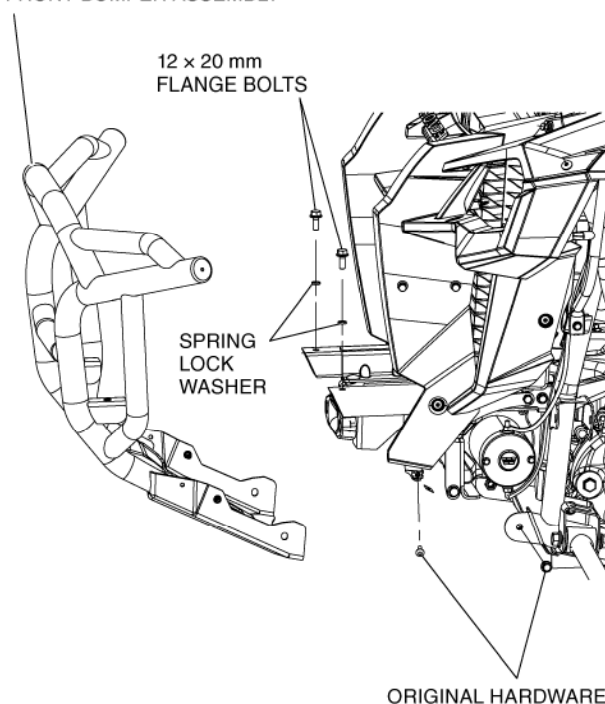
1. Remove original bumper. Install the left and right mounting tubes on the vehicle using the original hardware as shown.



Note: If a winch will be installed, refer to the winch Installation Instructions, before continuing to Step 2.

2. Install front bumper assembly on both mounting square tubes with original hardware on each side and the 12 x 20 mm flange bolts and spring lock washers as shown.

FRONT BUMPER ASSEMBLY



3. Tighten all the bolts to the values specified in the TORQUE CHART.