



# INSTALLATION INSTRUCTIONS

Accessory

INTRUSION BAR  
P/N 0SA81-HL6-A00

Application

SXS1000S2X  
SXS1000S2R

Publication No.

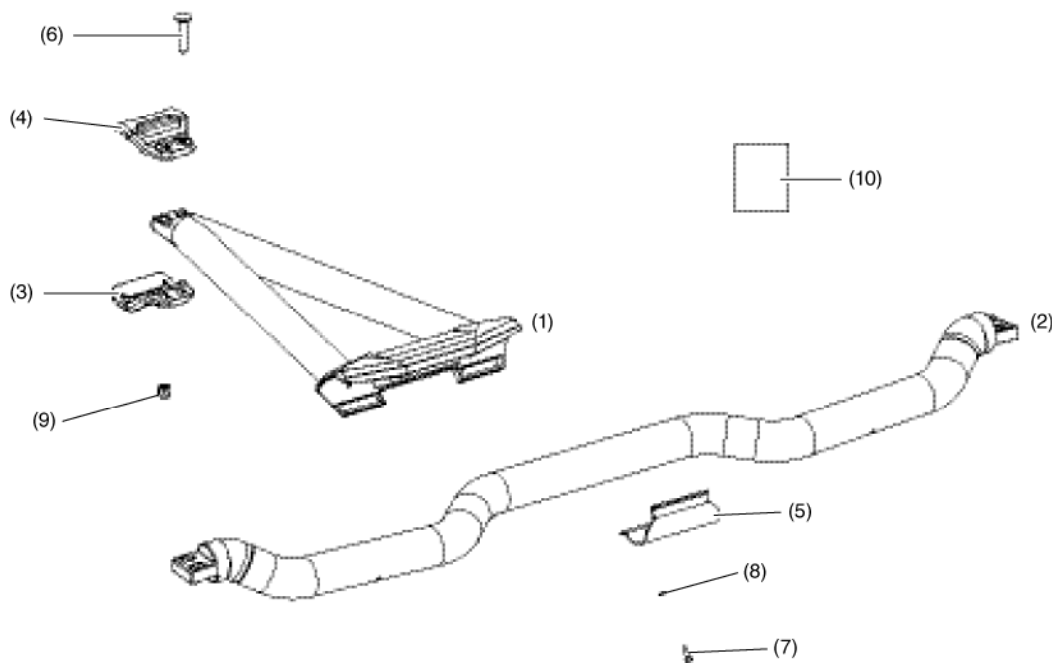
MII 16561

Issue Date

May 2019

**Honda Dealer: Please give a copy of these instructions to your customer.**

## PARTS LIST



No.	Description	Qty
(1)	Upper Tube Assembly	1
(2)	Lower Tube Assembly	1
(3)	Bracket	5
(4)	Short Bracket	1
(5)	Lower Bracket	1
(6)	Carriage Bolt 40 mm	6
(7)	3 mm Socket Head Screw	3
(8)	Spring Lock Washer	3
(9)	14 mm Cap Nut	6
(10)	Installation Instruction URL	1

## TOOLS REQUIRED

Socket (14 mm)  
Ratchet  
Torque wrench  
Box-end wrench (14 mm)  
Hex wrench (3 mm)

## TORQUE CHART

Tighten all screws, bolts, and nuts to their specified torque values. Refer to the Service Manual for the torque values of the removed parts.

Item	N·m	kgf·m	lbf·ft
14 mm Cap Nut	20	2.2	16
3 mm Socket Head Screw	2.5	0.2	22 (lbf.in)

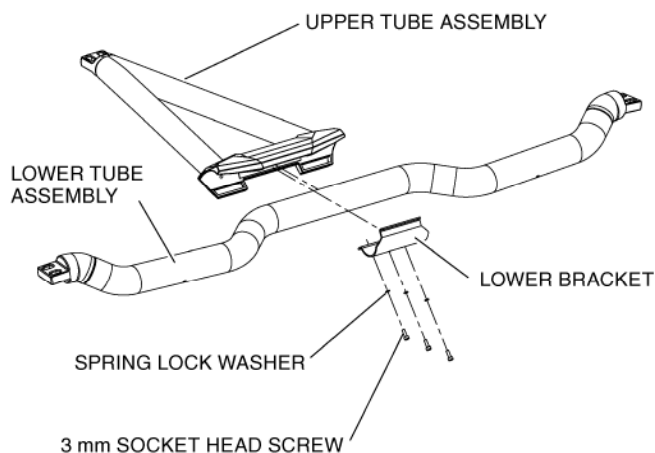
## INSTALLATION

### ⚠ CAUTION

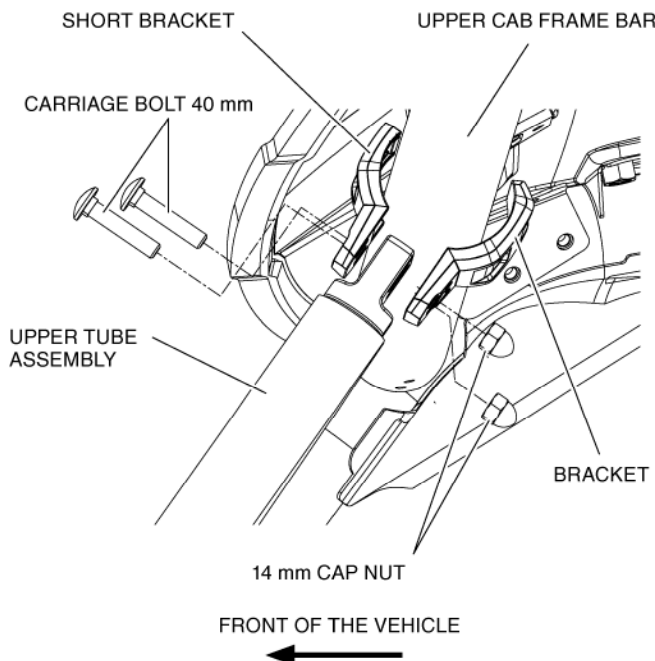
To prevent burns, allow the engine, exhaust system, radiator, etc., to cool before installing the accessory.

NOTE: This accessory cannot be used with a Honda accessory windshield, windscreen or audio unit.

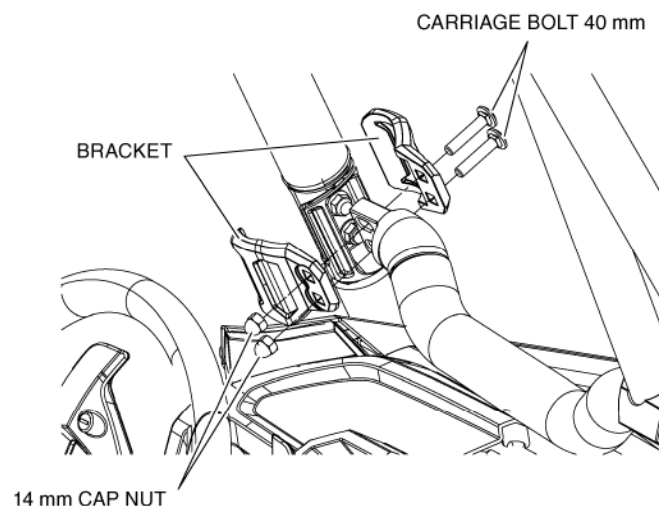
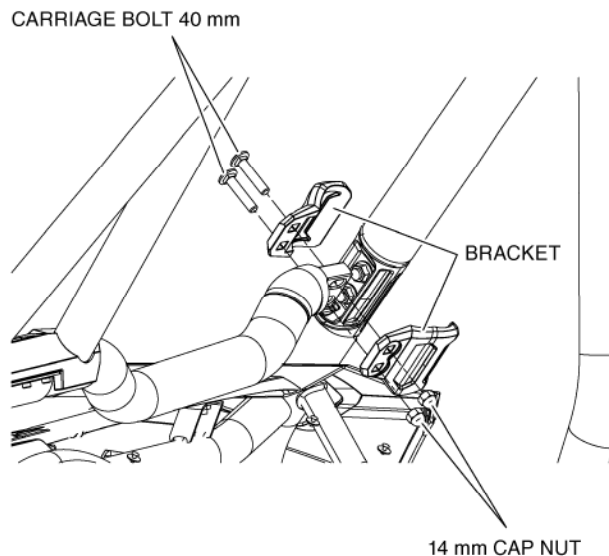
1. Loosely assemble the upper tube assembly with the lower tube assembly using the lower bracket, spring lock washers and 3 mm socket head screws.



2. Loosely install the upper tube assembly on the upper frontal rope using cut bracket (on top), bracket (on bottom), carriage bolts 40 mm length and 14 mm cap nuts as shown.



3. Loosely install the right side of the lower tube with the brackets, carriage bolts 40 mm and 14 mm cap nuts. Repeat on the left side.



**NOTE: Perform the following steps in the order shown.**

4. First, tighten 3 mm socket head Allen cap screws to the value specified in the TORQUE CHART.
5. Next, tighten right and left 14 mm cap nuts to the value specified in the TORQUE CHART.
6. Last, tighten upper 14 mm cap nuts to the value specified in the TORQUE CHART.