

# HONDA

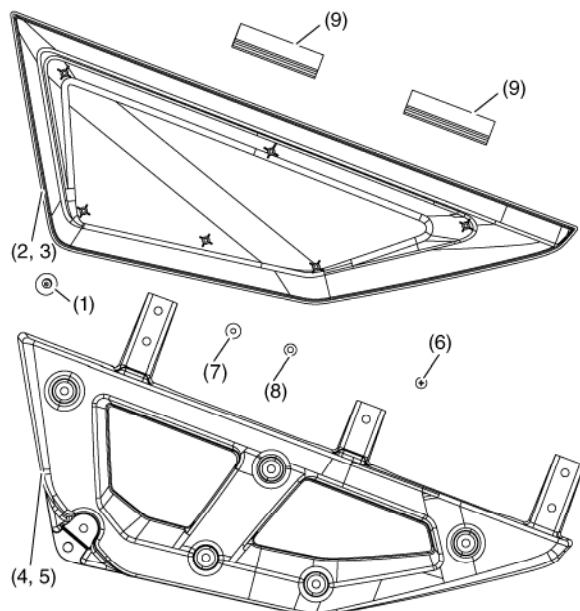
## INSTALLATION INSTRUCTIONS

Accessory  
**LOWER DOOR PANELS**  
P/N: 08R77-HL6-A00

Application  
**SXS1000S2R**  
**SXS1000S2X**

Publication No.  
**MII 16561**  
Issue Date  
**March 2019**

### PARTS LIST



No.	Description	Qty
(1)	Rubber washer	2
(2)	Lower door cover R	1
(3)	Lower door cover L	1
(4)	Door stay R	1
(5)	Door stay L	1
(6)	5 × 12 mm tapping screw	12
(7)	6 × 8 mm screw	10
(8)	6 mm flange nut	10
(9)	Bulb Seal	4
(10)	Installation Instructions URL (not shown)	1

### TOOLS AND SUPPLIES REQUIRED

Philips® head screwdriver  
5 mm Hex wrench  
Torque wrench  
Socket, 10 mm  
Ratchet  
Drill  
Drill bit, 10 mm  
Rotary tool  
File

### TORQUE CHART

Tighten all screws, bolts, and nuts to their specified torque values. Refer to the Service Manual for the torque values of the removed parts.

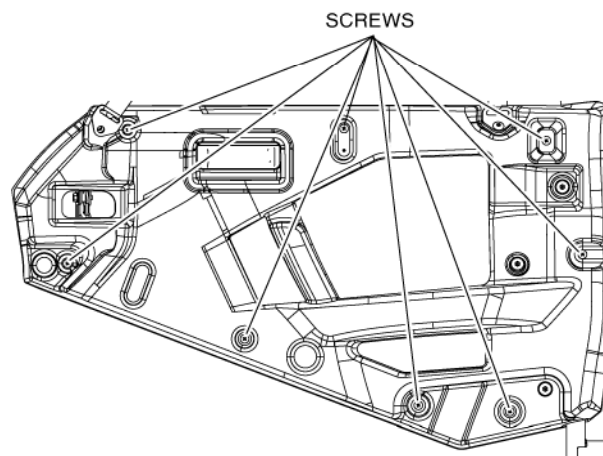
Item	N·m	kgf·m	lbf·ft
6 × 8 mm screw	9	0.9	7
5 × 12 mm tapping screw	1	0.1	0.8

### USE AND CARE INFORMATION

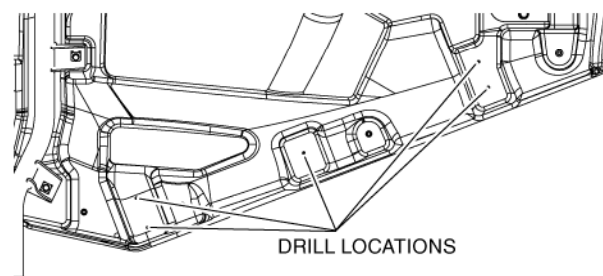
Check the accessory mounts frequently and retighten if necessary.

### INSTALLATION

1. Remove door cover from the door panel by removing eight tapping screws in the locations shown. Set the door cover and tapping screws aside for reuse.



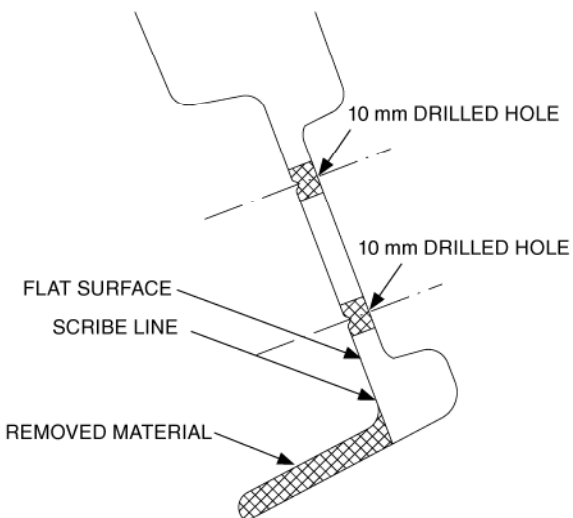
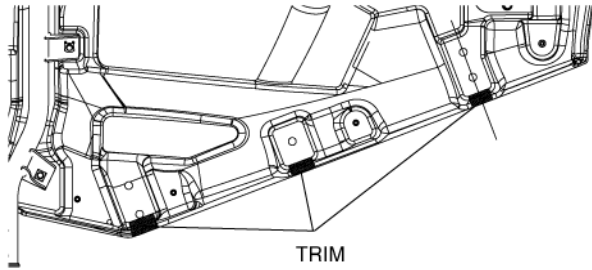
2. Drill five 10 mm holes in the original door panel at the locations shown below. There is a locating dot in the center of each drilling point on the outside of the door panel. Use a file to remove any burrs from around the drilled holes.



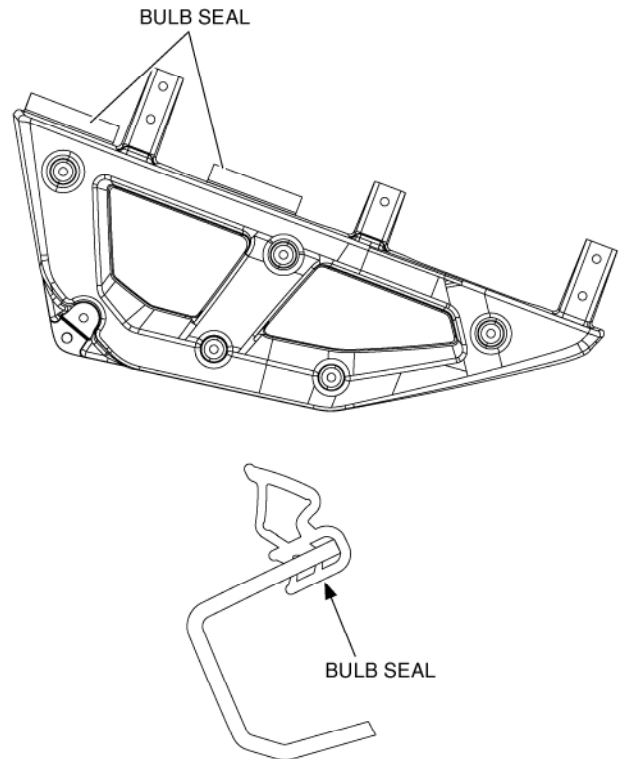
3. Trim the three locations shown below using a rotary tool, then use a carbide burr or file to finish. The bottom edge must be removed until flush with the flat surface to ensure a good fit.

**NOTE:**

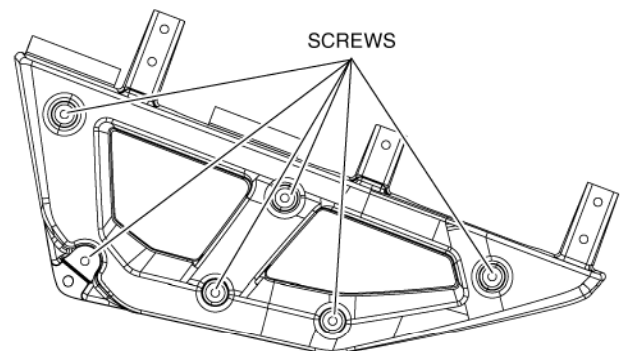
Do not trim beyond the scribe line or the fit may be loose. First, cut inside the scribe line then use a carbide burr or file to finish the cut to the scribe line.



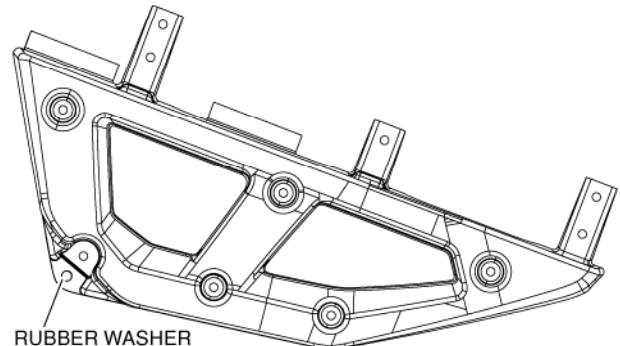
4. Attach two bulb seals to each door stay as shown.



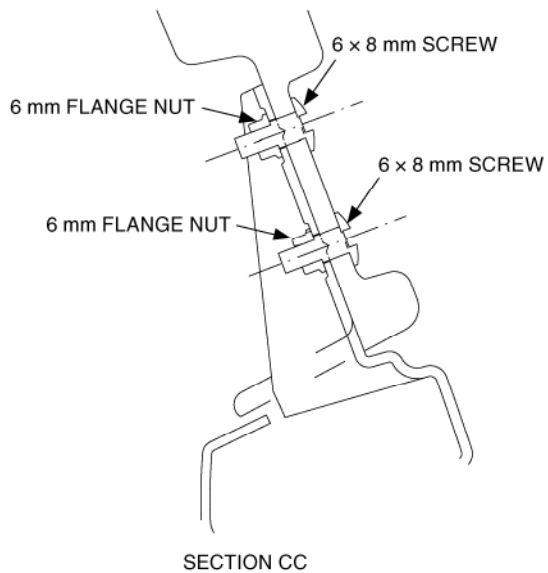
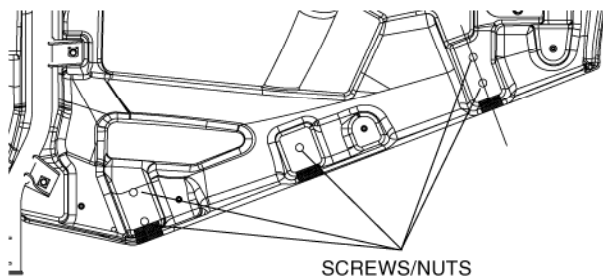
5. Attach the lower door cover to the door stay using six 5 × 12 mm tapping screws per side.



6. Install one rubber washer to the location shown.



7. Attach the door stay to the door panel with five 6 mm flange nuts and five 6 × 8 mm screws as shown.



8. Attach the original door cover in the reverse order of removal using the 8 mm tapping screws from step 1.
9. Repeat all steps on the other door.