



INSTALLATION INSTRUCTIONS

Accessory

TRAILING ARM GUARDS
P/N 0SK21-HL6-A00

Application

SXS1000S2R

Publication No.

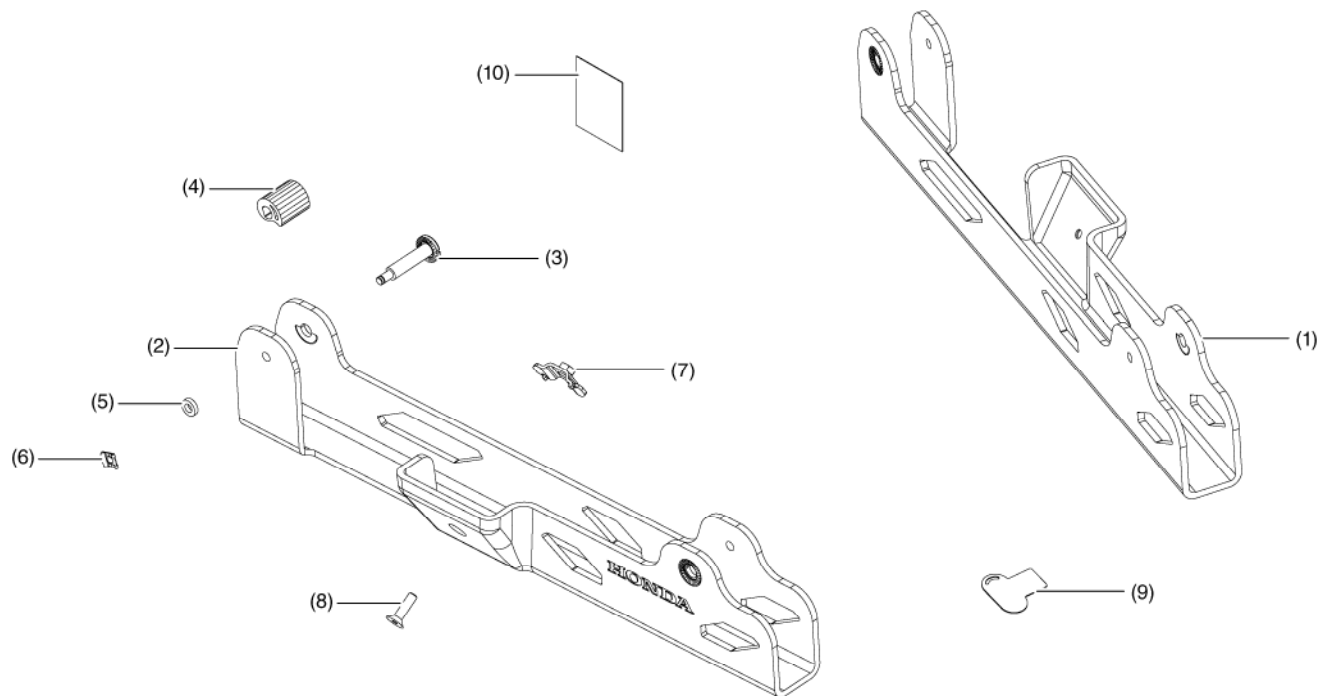
MII 16561

Issue Date

March 2019

Honda Dealer: Please give a copy of these instructions to your customer.

PARTS LIST



No.	Description	Qty
(1)	Left arm guard	1
(2)	Right arm guard	1
(3)	Shaft	4
(4)	Cam	4
(5)	Spacer	4
(6)	8 mm Clips	4
(7)	Side attachment bracket	2
(8)	5 x 30 mm hex head screw	2
(9)	Key	1
(10)	Installation Instructions URL	1

TOOLS REQUIRED

Torque wrench

Hex wrench (5 mm)

Trigger clamp

TORQUE CHART

Tighten all screws, bolts, and nuts to their specified torque values. Refer to the Service Manual for the torque values of the removed parts.

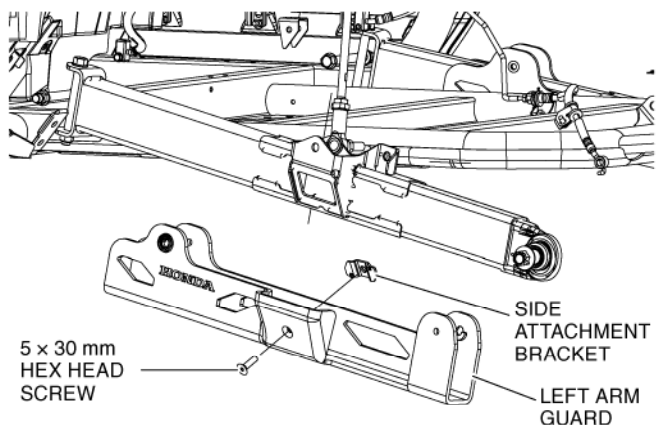
Item	N-m	kgf-m	lbf-ft
5 mm hex head screw	22	2.2	16

INSTALLATION

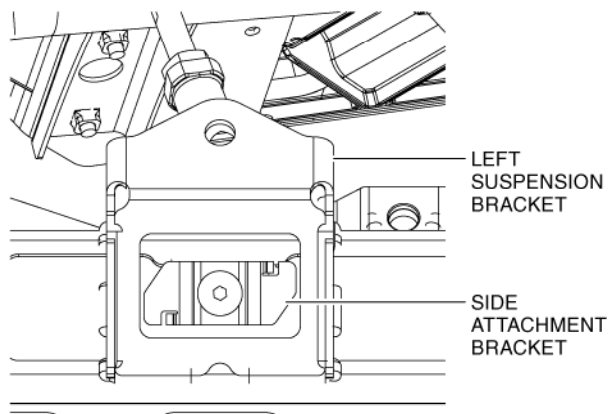
⚠ CAUTION

To prevent burns, allow the engine, exhaust system, radiator, etc., to cool before installing the accessory.

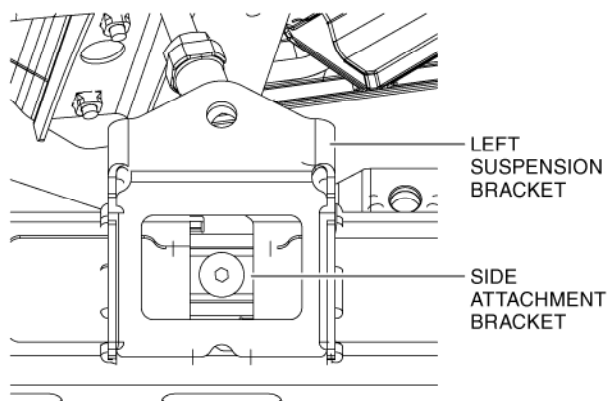
1. Start on the left side. Loosely install the side attachment bracket with the 5 × 30 mm hex head screw and tighten to the value specified in the TORQUE CHART.



2. Position the side attachment bracket horizontally and insert the bracket through the rectangular hole in the rear arm of the vehicle.

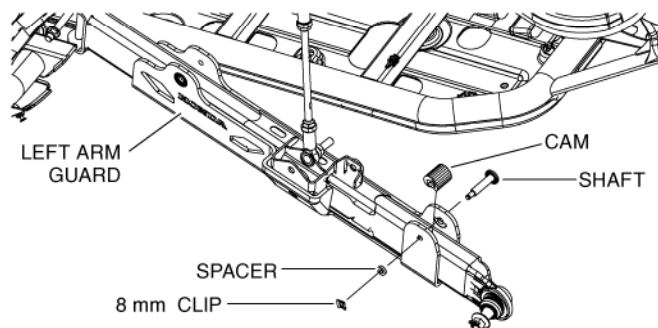


3. Rotate the side attachment bracket vertically and tighten the 5 × 30 mm hex head screw to the value specified on the TORQUE CHART.



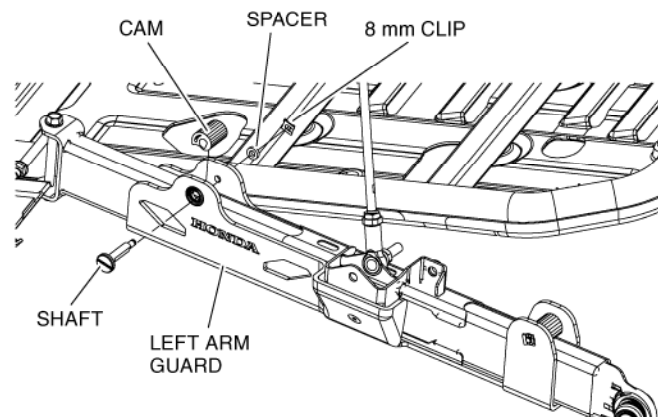
4. Insert the cam between the ends of the left arm guard and pass the shaft through with a spacer at the end. Use the trigger clamp to set the hardware assembly with the 8 mm clip as shown.

<REAR HARDWARE ASSEMBLY>

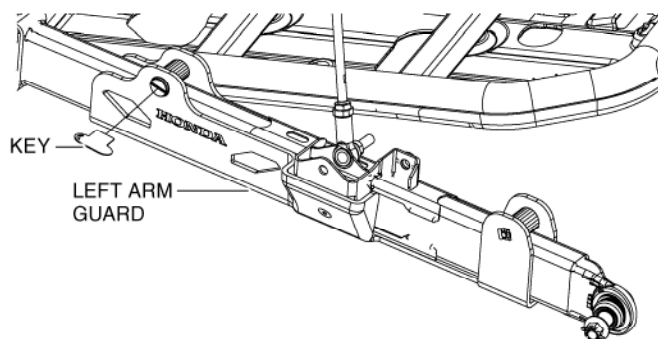


5. Insert the cam between the ends of the left arm guard and pass the shaft through with a spacer at the end. Use the trigger clamp to set the hardware assembly with the 8 mm clip as shown.

<FRONT HARDWARE ASSEMBLY>



6. Tighten the shaft with the key.



7. Repeat steps 1 through 6 on the right side.