

# HONDA

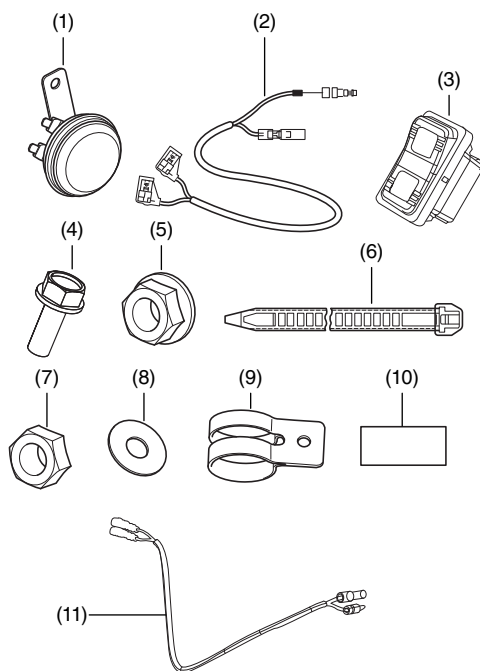
## INSTALLATION INSTRUCTIONS

Accessory  
**HORN**  
P/N 08P75-HL5-A00  
**HORN WIRE HARNESS**  
P/N 08Z71-HL5-A00

Application  
**SXS500M2**

Publication No.  
**MII 14948**  
Issue Date  
**October 2014**

### PARTS LIST

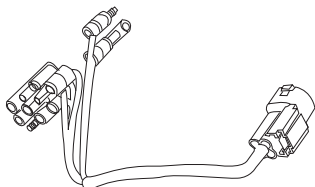


No.	Description	Qty
(1)	Horn	1
(2)	Horn wire harness (P/N 08Z71-HL5-A00, sold separately)	1
(3)	Horn switch	1
(4)	16 mm, flange bolt	1
(5)	6 mm, flange nut	1
(6)	Wire tie	5
(7)	16 mm, hex nut	1
(8)	6 mm, plain washer	1
(9)	Horn band	1
(10)	Band cushion	1
(11)	Horn switch sub-harness	1

#### ACCESSORY SUB-HARNESS (SOLD SEPERATELY)

P/N 08Z08-HL5 -A00

The accessory sub-harness is required for the installation of this accessory.



### TOOLS AND SUPPLIES REQUIRED

Torque wrench  
Socket, 10 mm  
Ratchet  
Drill  
Step drill, 16 mm (5/8 in)  
Box-end wrench, 10 mm  
Rotary tool  
Thread lock (LOCTITE 242 or equivalent)

### TORQUE CHART

Tighten all screws, bolts, and nuts to their specified torque values. Refer to the service manual for the torque values of the removed parts.

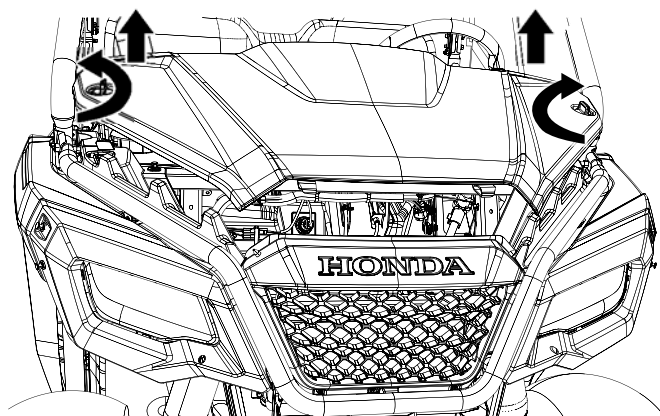
Item	N-m	kgf-m	lbf-ft
6 mm flange bolt and nut	12	1.2	9
16 mm hex nut	1.5	0.1	1.1

### USE AND CARE INFORMATION

Check the accessory mounts frequently and retighten if necessary. Trim all excess material on wire ties no shorter than 5 mm.

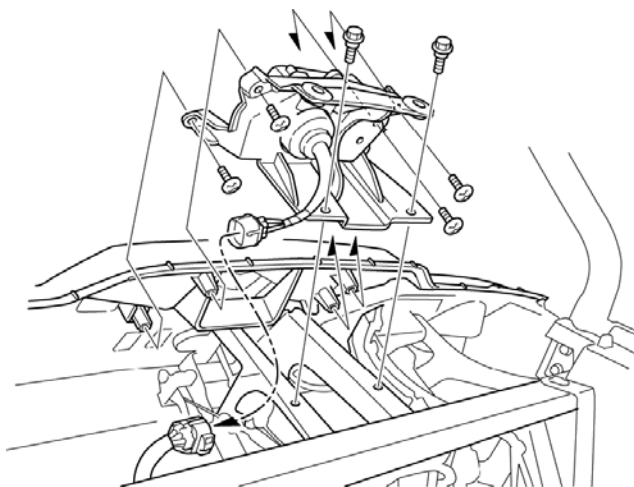
### INSTALLATION

1. Remove front hood by turning knobs in an outward direction and then pulling up as shown.



3. Disconnect the combination meter sub-harness 10P (Gray) connector.

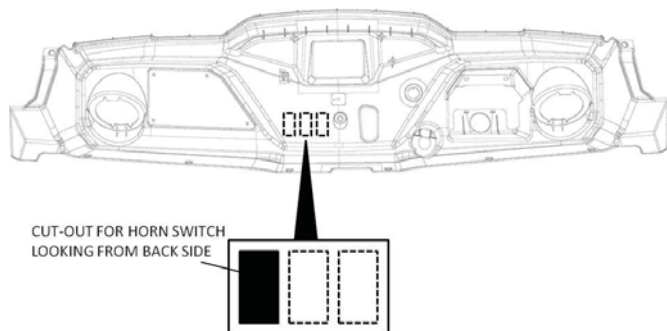
Remove the four screws, two special bolts and combination meter/rear cover assembly.



4. Using the molded template on the back side of the instrument panel, make a starter hole with the 5/8 inch step drill and then enlarge the cut-out for the horn switch using a rotary tool and carbide burr.

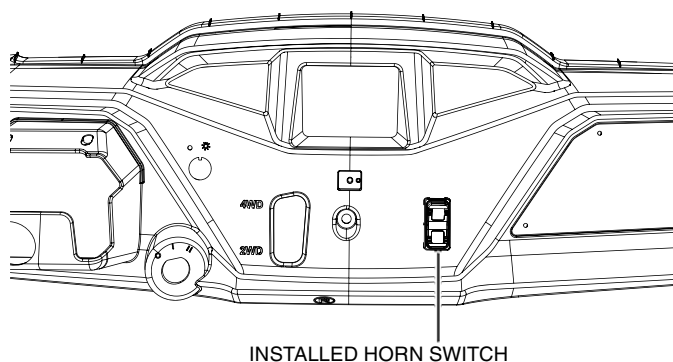
NOTE: When enlarging the hole for the switch with the carbide burr, leave the outline unbroken and then use a file to finish the hole.

<VIEW UNDER HOOD, BACK SIDE OF INSTRUMENT PANEL>

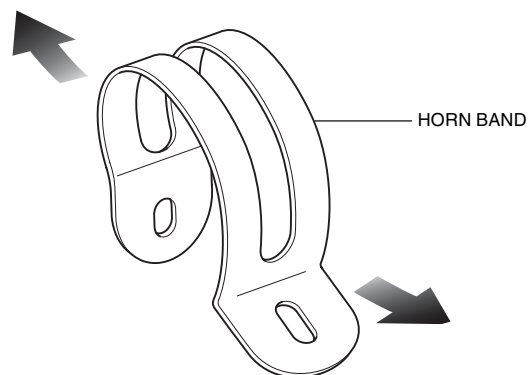


5. Install the horn switch into the cut-out in the instrument panel as shown.

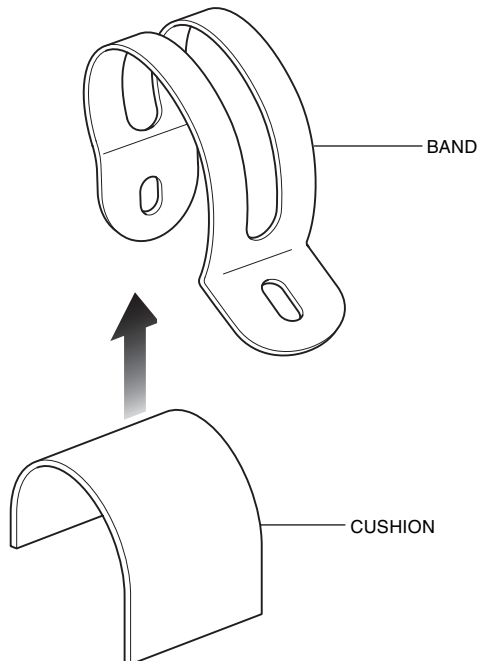
<INSTRUMENT PANEL, VIEW FROM INSIDE THE CAB>



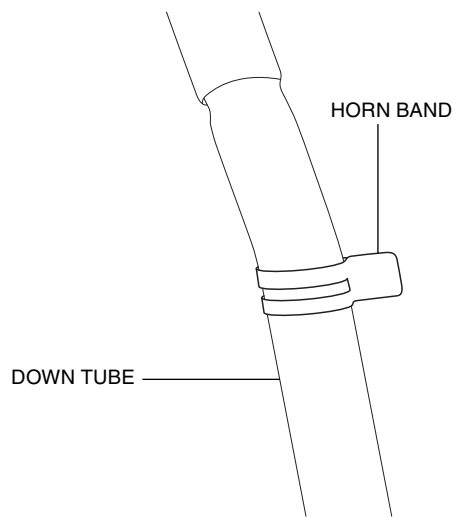
6. Expand horn band as shown.



7. Install the cushion to the band.

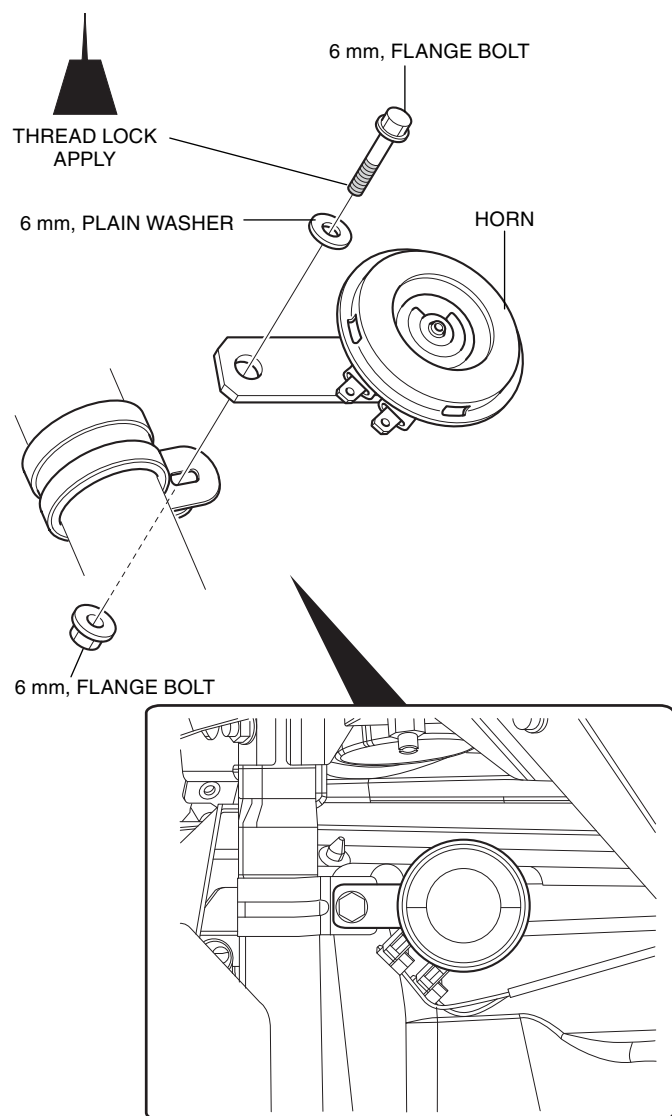


8. Install the assembled horn band to the right front frame down tube.

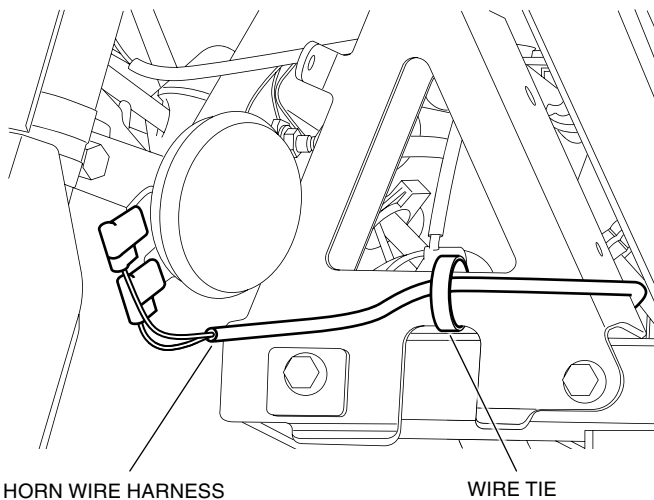
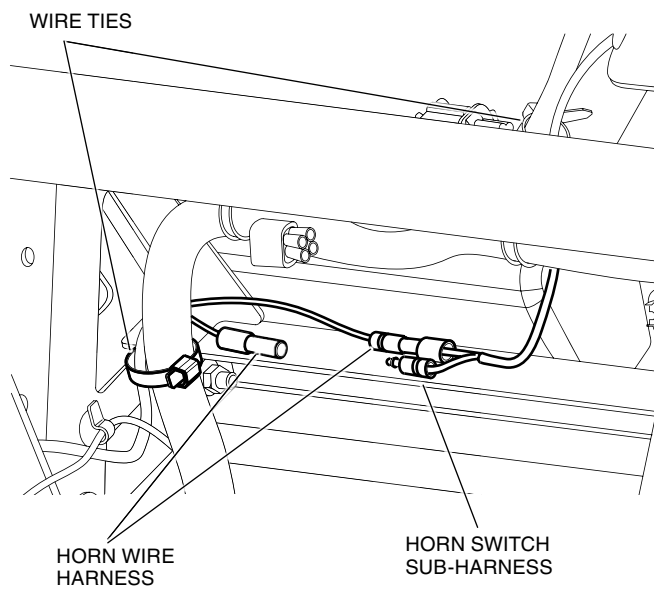
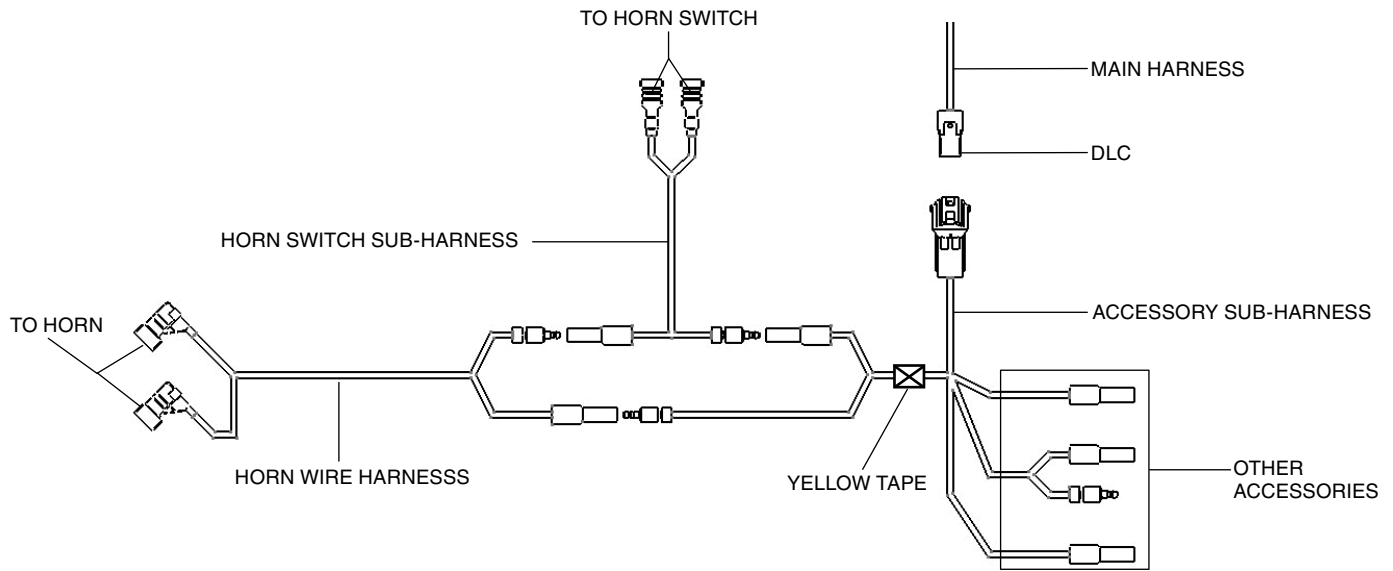


9. Install the horn at a 90 degree angle on the down tube. Connect the horn wire harness to the horn.

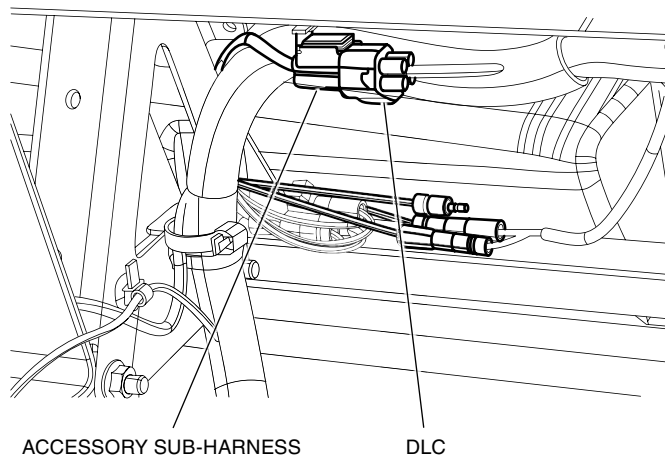
<Right front upper wheel well>



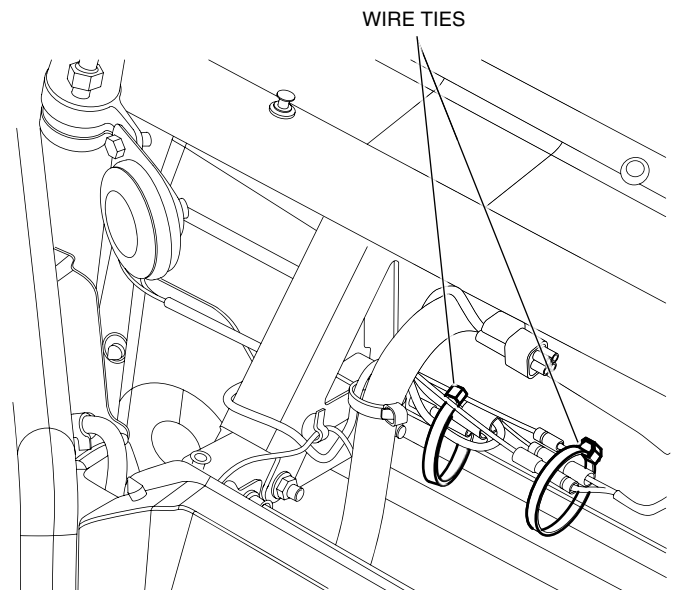
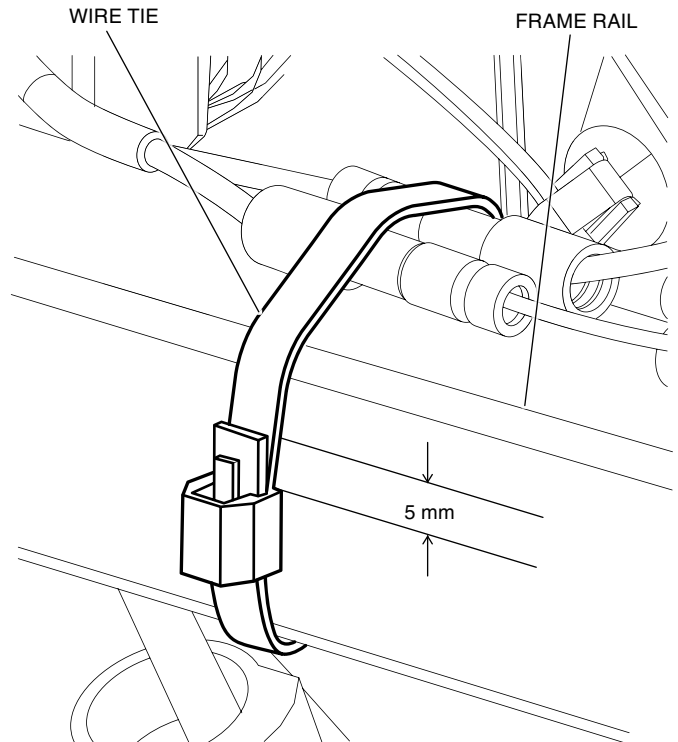
10. Connect the horn wire harness to the horn switch sub-harness by matching the wire colors as shown.  
Connect the horn switch harness to the horn switch and the accessory sub-harness by matching the wire colors as shown.  
Secure the harnesses to the frame using three wire ties as shown.



11. Remove the dummy cover (save) from the DLC and connect the accessory sub-harness to the DLC.



12. Secure the accessory sub-harness using two wire ties to the vehicle frame rail as shown.



13. Reinstall the removed parts in the reverse order of removal.