



INSTALLATION INSTRUCTIONS

Accessory

BUSBAR KIT
P/N 0SS27-HL6-A00

Application

**SXS1000S2X/S2XD/S2R/
S2RD/S4X/S4XD**

Publication No.

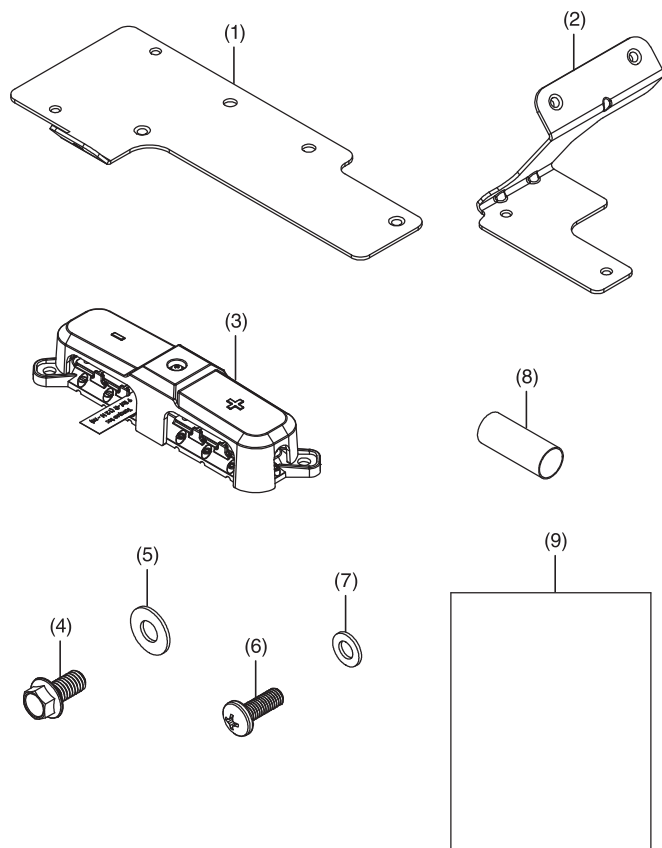
MII 17811

Issue Date

May 2022

Honda Dealer: Please give a copy of these instructions to your customer.

PARTS LIST



No.	Description	Qty.
(1)	Main busbar mounting plate	1
(2)	Busbar lower support bracket	1
(3)	Busbar	1
(4)	M6 × 12 mm flange screw (8 mm head)	4
(5)	M6 × 14 mm flat washer	4
(6)	Phillips pan-head screw M5 × 14 mm	2
(7)	M5 × 10 mm flat washer	2
(8)	Heat shrink	2
(9)	Installation Instructions URL	1

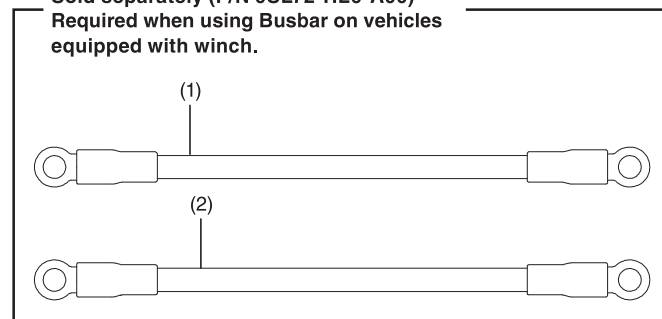
TOOLS REQUIRED

Torque driver
Socket (8 mm)
Socket (10 mm)
#1 phillips bit
#2 phillips bit
Heat gun or electrical tape

BUSBAR CABLE VRX WINCH

Sold separately (P/N 0SL72-HL6-A00)

Required when using Busbar on vehicles equipped with winch.



No.	Description	Qty.
(1)	#6 AWG cable, black	1
(2)	#6 AWG cable, red	1

TORQUE CHART

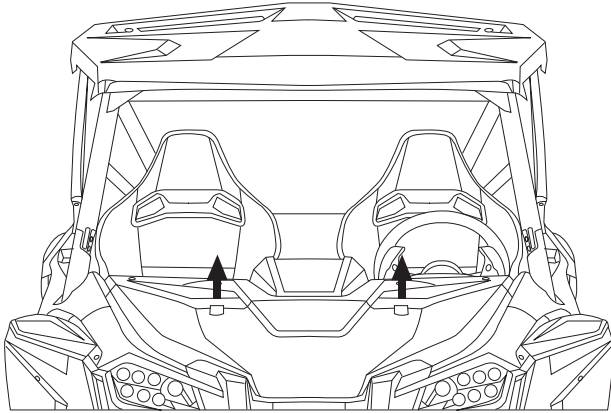
Tighten all screws, bolts, and nuts to their specified torque values. Refer to the Service Manual for the torque values of the removed parts.

Item	N·m	kgf·m	lbf·ft
8 mm head flange screw	7.8	0.8	5.8
#1 drive phillips screw	1.7	0.10	0.73
#2 drive phillips screw	5.0	0.509	3.6
M6 terminal nut	12.0	1.22	9.0

INSTALLATION

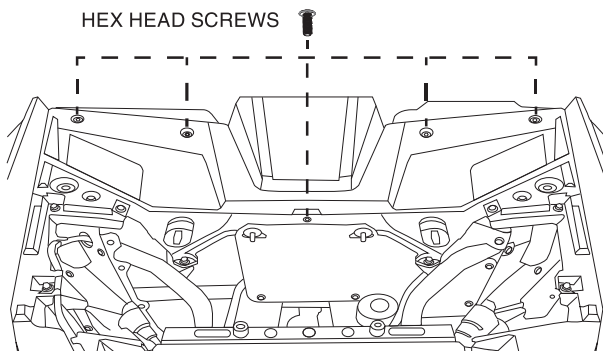
⚠ CAUTION: To prevent burns, allow the engine, exhaust system, radiator, etc., to cool before installing the accessory.

1. Remove the hood by first lifting and turning the two hood latches, then lift the hood to remove.

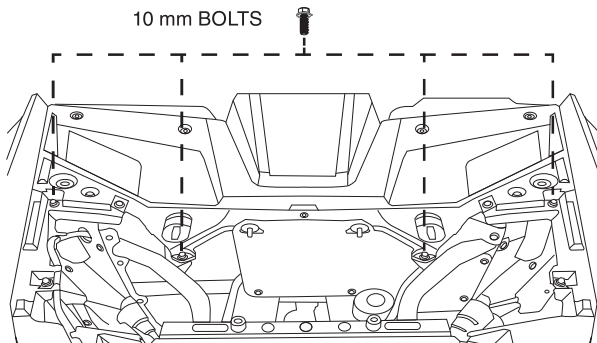


2. Remove the dash trim panel by first removing the five hex head screws (as shown).

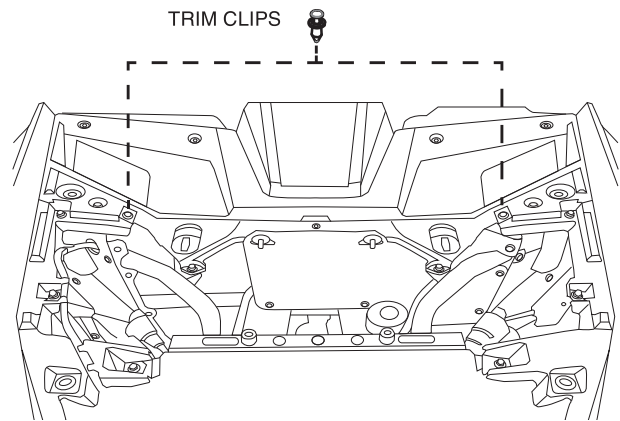
TOP DASH VIEW



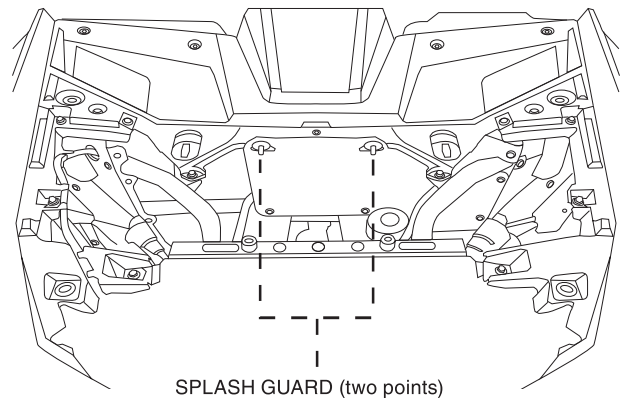
3. Remove the four 10 mm flange bolts (as shown).



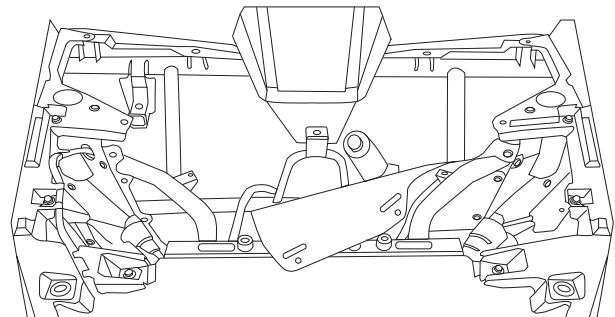
4. Remove the two trim clips (as shown).



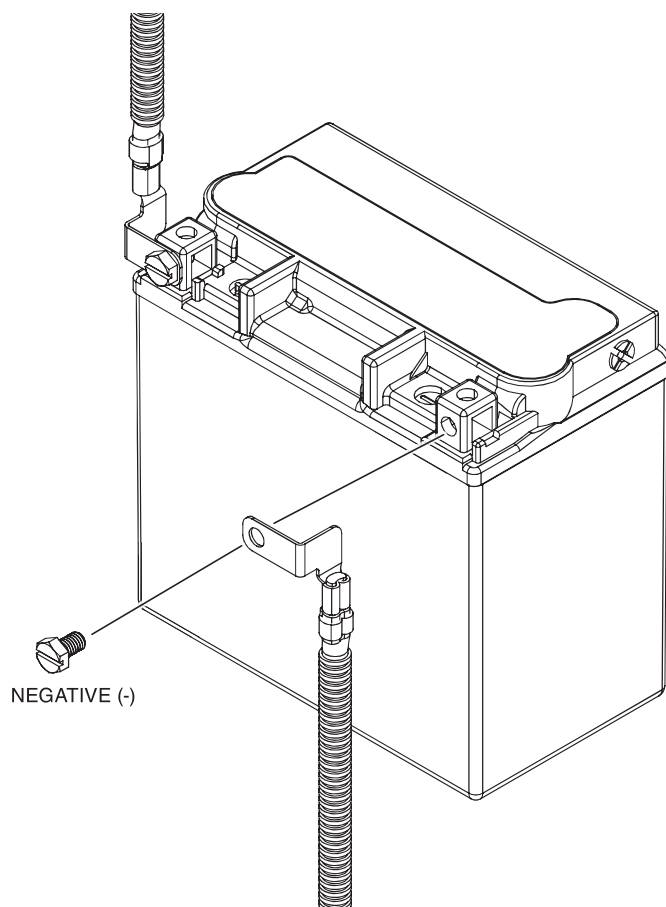
5. Detach the top portion of the rubber splash guard by unhooking it from the two points as shown below.



6. Fold down the top portion of the rubber splash guard then remove the dash trim panel.

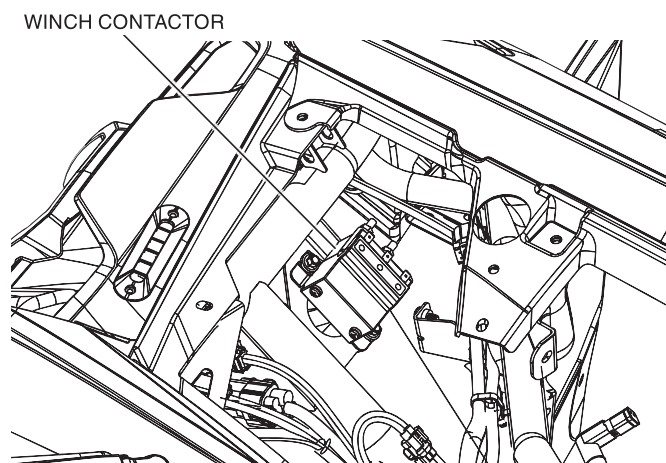


7. Remove the negative terminal from the battery.

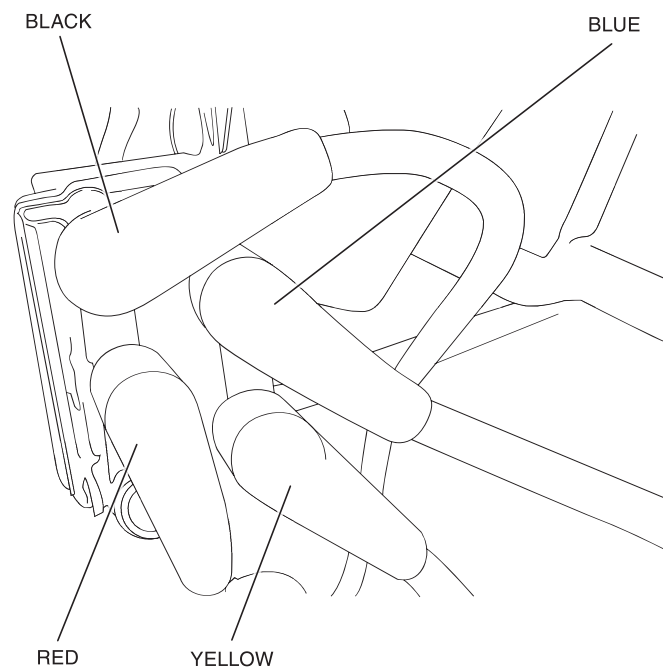


If vehicle is equipped with a winch:

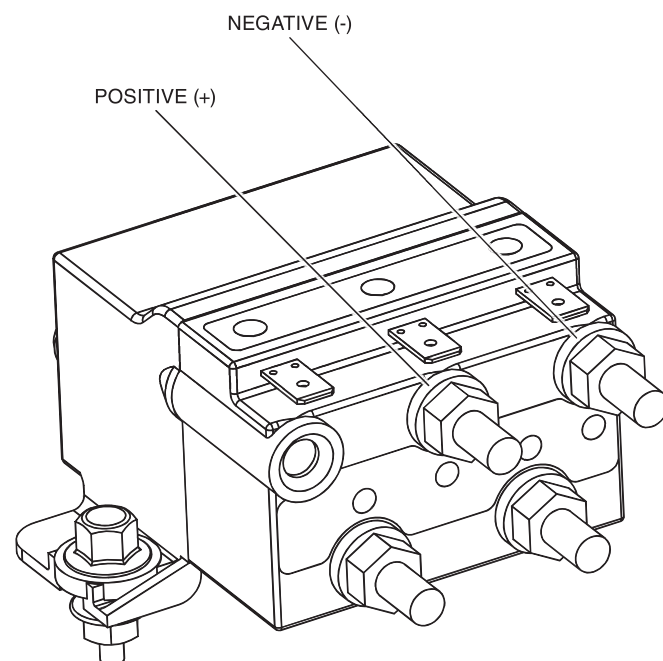
8. Locate the winch contactor



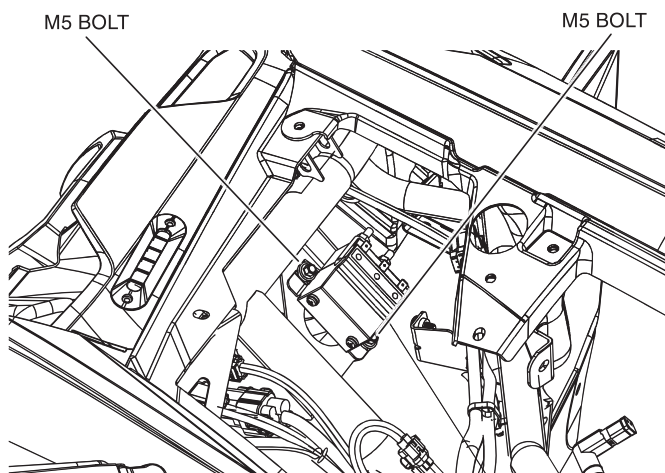
9. Pull the rubber terminal boots off the red and black power cable terminals at the contactor.



10. Remove the battery cables from the contactor by loosening the M6 nuts. Set nuts, lock washers and cables aside for reassembly later.

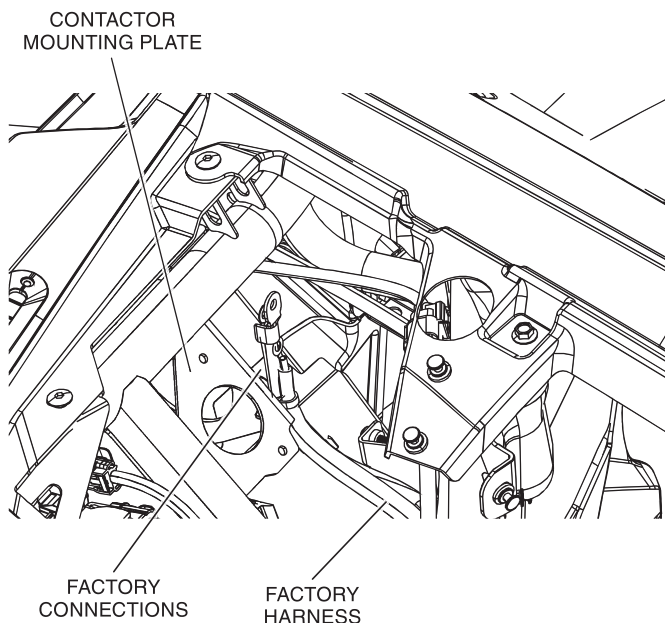


11. Remove the two factory M5 bolts, washers and nuts attaching the contactor to the frame, set contactor and hardware aside for later use.



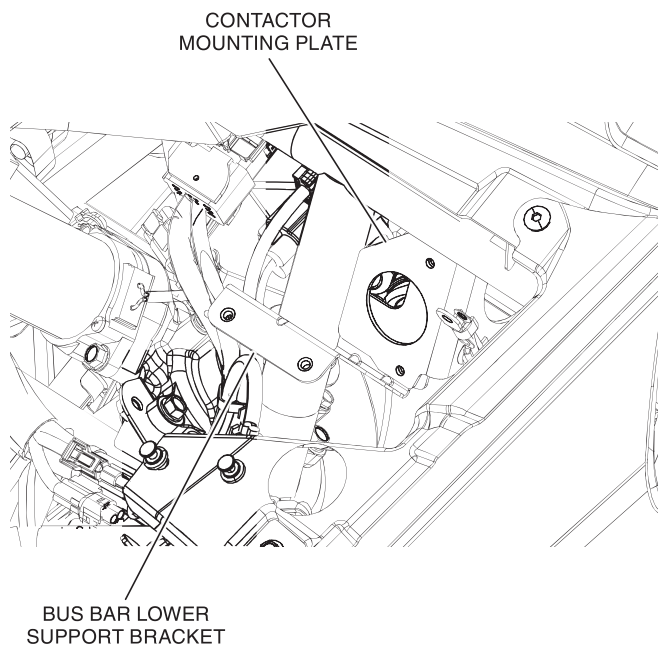
If vehicle is not equipped with a winch:

12. Unclip the power (+) and ground (-) cable connections near the contactor mounting plate and move the wires out of the way.

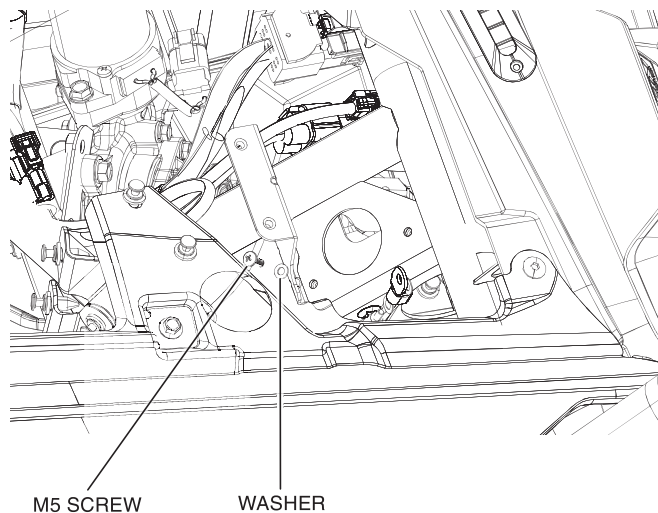


ALL APPLICATIONS:

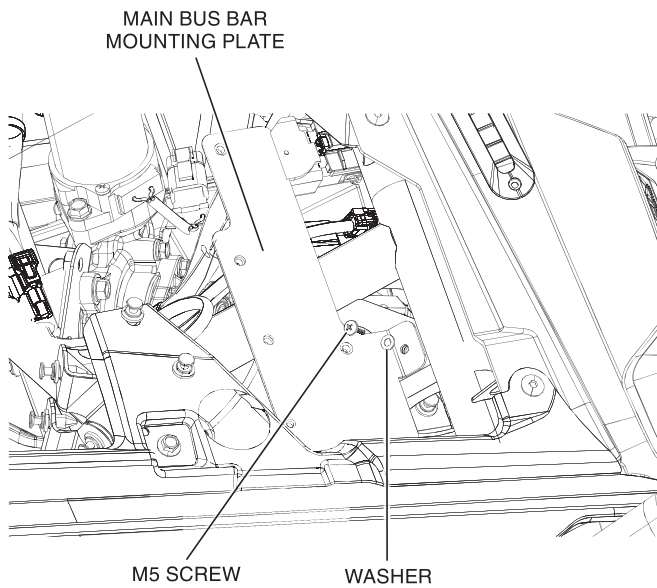
13. Slide Busbar Lower Support Bracket from bottom behind the factory winch contactor mounting plate.



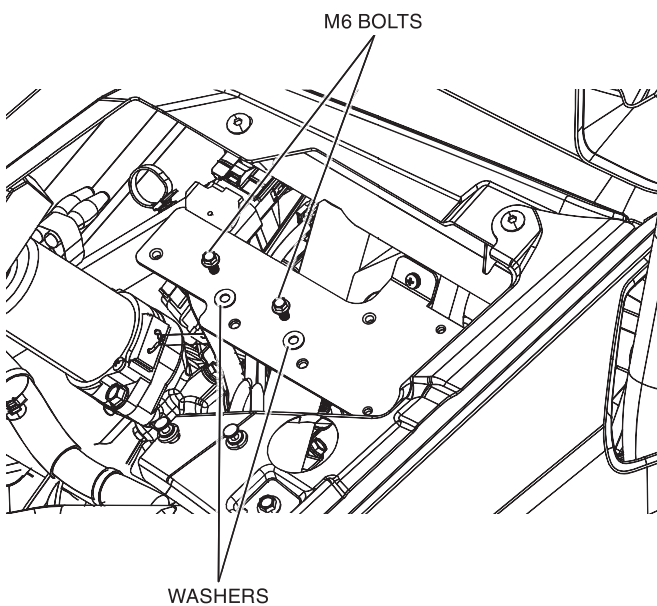
14. Attach busbar Lower Support Bracket with M5 screw and washer from the front of the bracket.



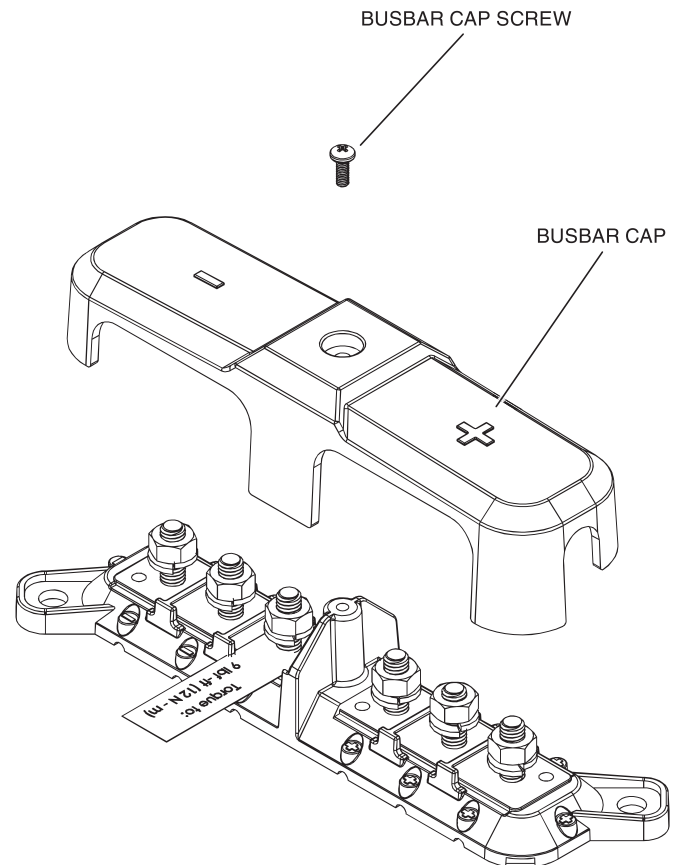
15. Using M5 screw and washer secure Main Busbar Mounting Plate to the sub bracket.



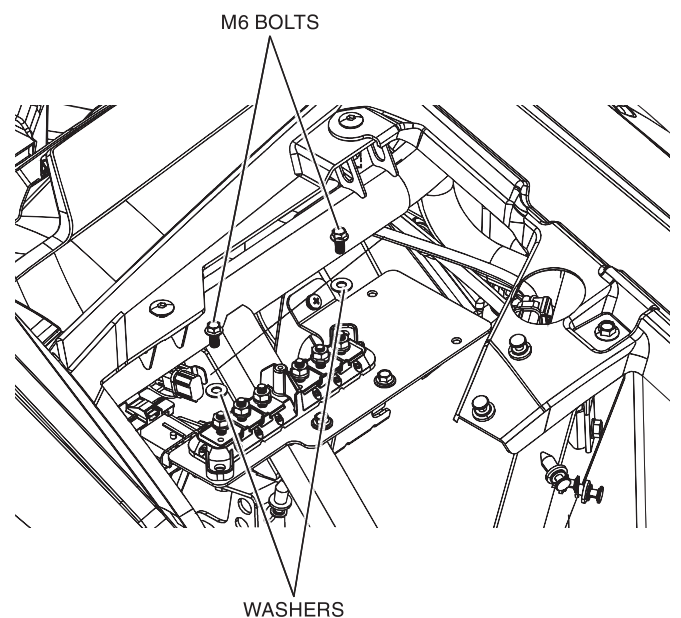
16. Attach front of the Main Busbar Mounting Plate to the Busbar Lower Support Bracket with 2 M6 bolts and washers provided.



17. Remove the busbar cap screw and cap from busbar module.

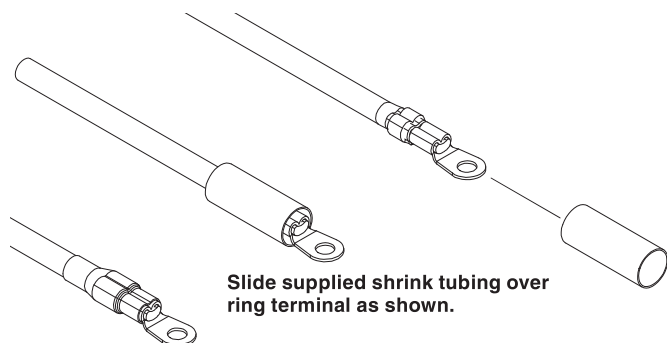


18. With the positive terminals on the driver's side, mount the busbar module using 2 M6 bolts and washers.



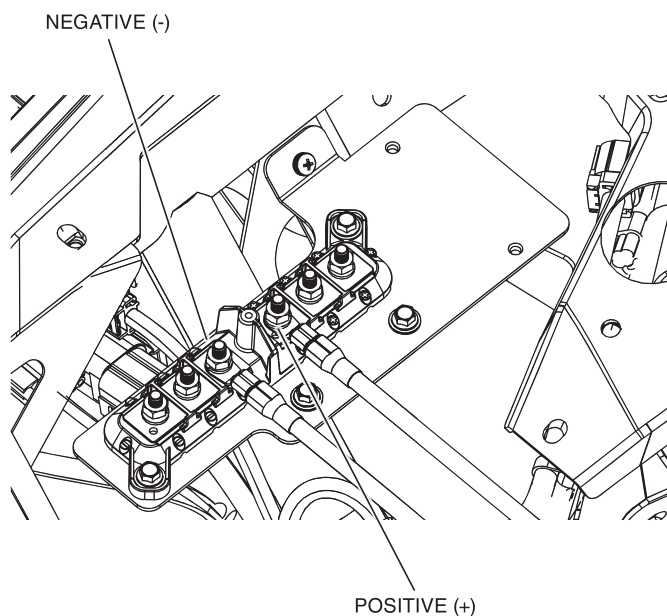
If vehicle is not equipped with a winch:

19. Locate the factory positive (+) and negative (-) cable connectors from Step 12. Use the supplied Heat Shrink and install over each connector as shown. Electrical tape can be used as a substitute for Heat Shrink.



Once in place, apply heat until shrink tubing is tightly covering the crimped section of ring terminal.

20. Connect the factory positive (+) and negative (-) cable connectors from Step 5 to the busbar as shown in the image.

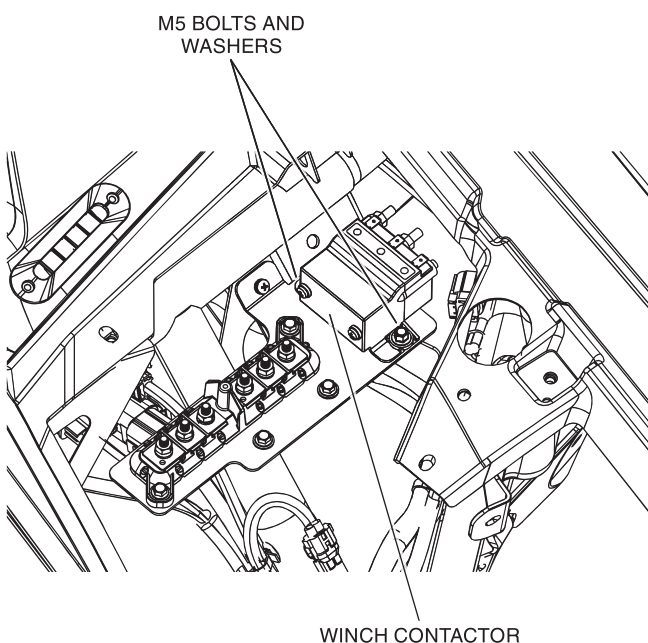


Torque nuts to 12 N·m (8.8 ft-lbf)

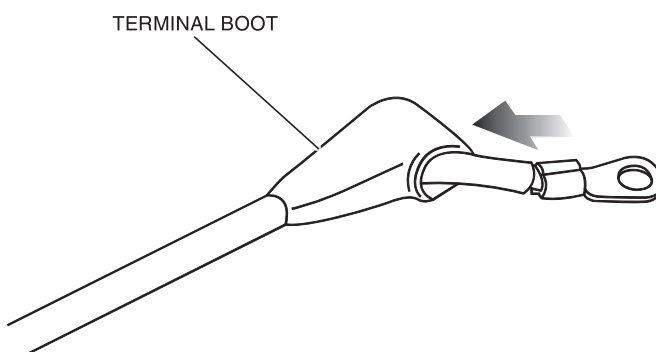
⚠ WARNING: Do not to exceed the recommended torque specs or damage to busbar module can occur

If vehicle is equipped with a winch:

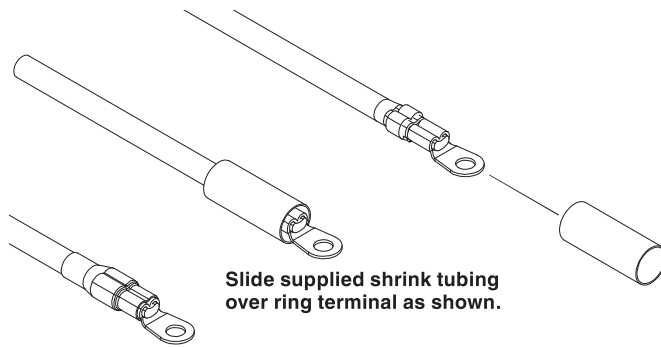
21. Re-mount the contactor to the top of the Main Busbar Mounting Plate using the two pre-threaded M5 holes. Take the factory M5 bolts and washers removed in Step 11 and thread contactor to plate. Discard the factory nuts.



22. Locate the factory positive (+) and negative (-) cable connectors removed from winch contactor in Step 10. Remove the rubber terminal boot over the ends of each cable as shown.

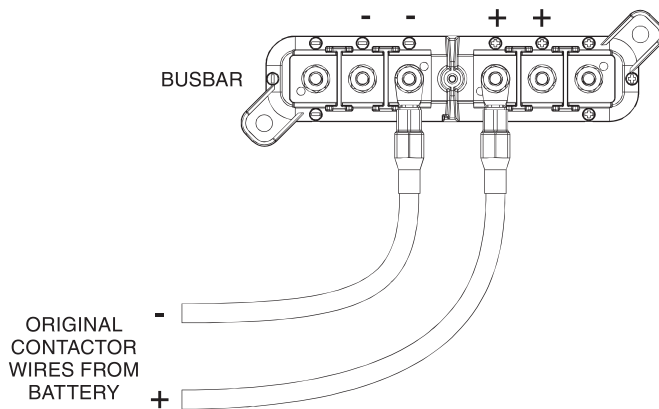


23. Use the supplied Heat Shrink and install it over the factory contactor positive (+) and negative (-) cable connectors as shown. Electrical tape can be used as a substitute for Heat Shrink.



Once in place, apply heat until shrink tubing is tightly covering the crimped section of ring terminal.

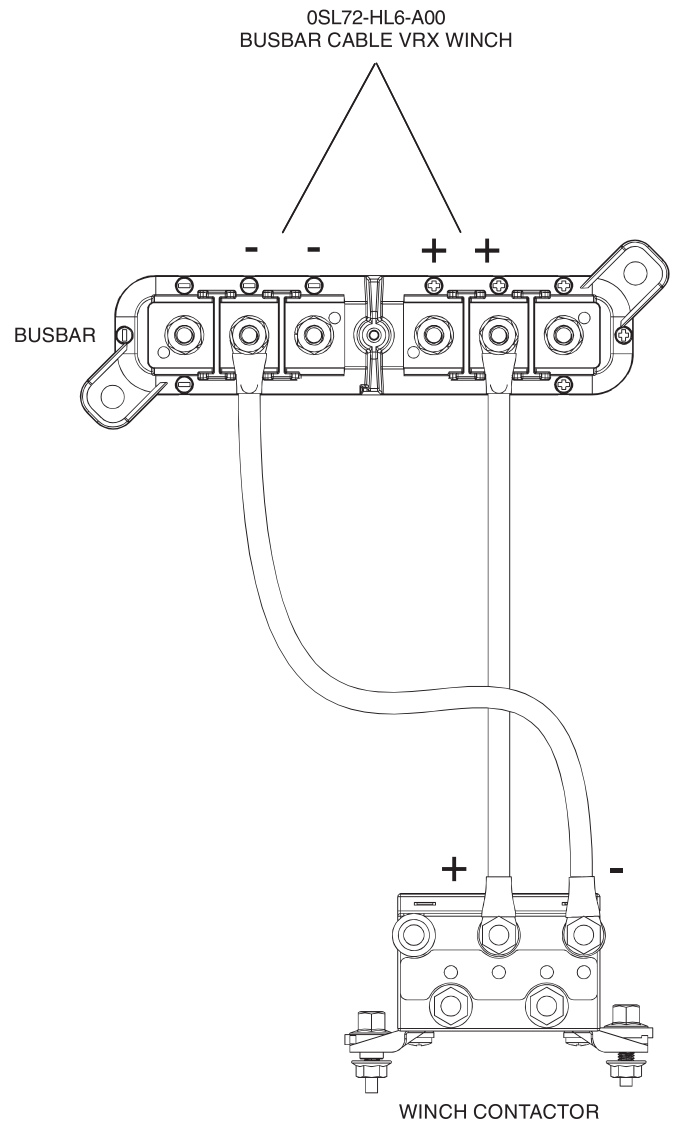
24. Connect the positive (+) and negative (-) contactor wires to the busbar as shown in the image.



Torque nuts to 12 N-m (9 ft-lb).

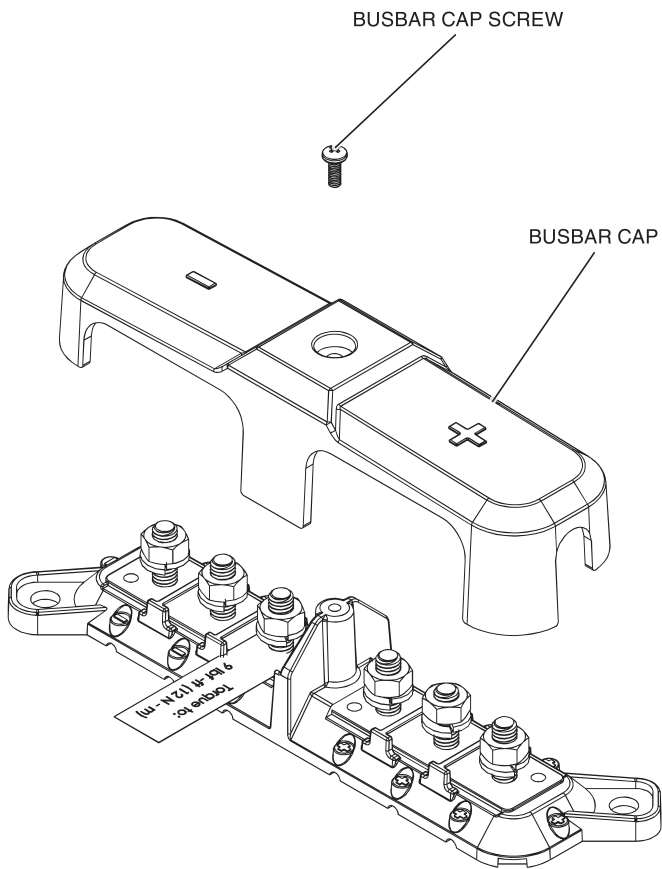
⚠ WARNING: Do not to exceed the recommended torque specs or damage to busbar module can occur

25. Use busbar cables (sold separately) and connect the positive (+) and negative (-) wires to the bus bar as shown in the image. Torque nuts to 12 N-m (9 ft-lb). Connect the opposite ends of the cables to the winch contactor using the factory M6 nut and washers previously removed in Step 10.

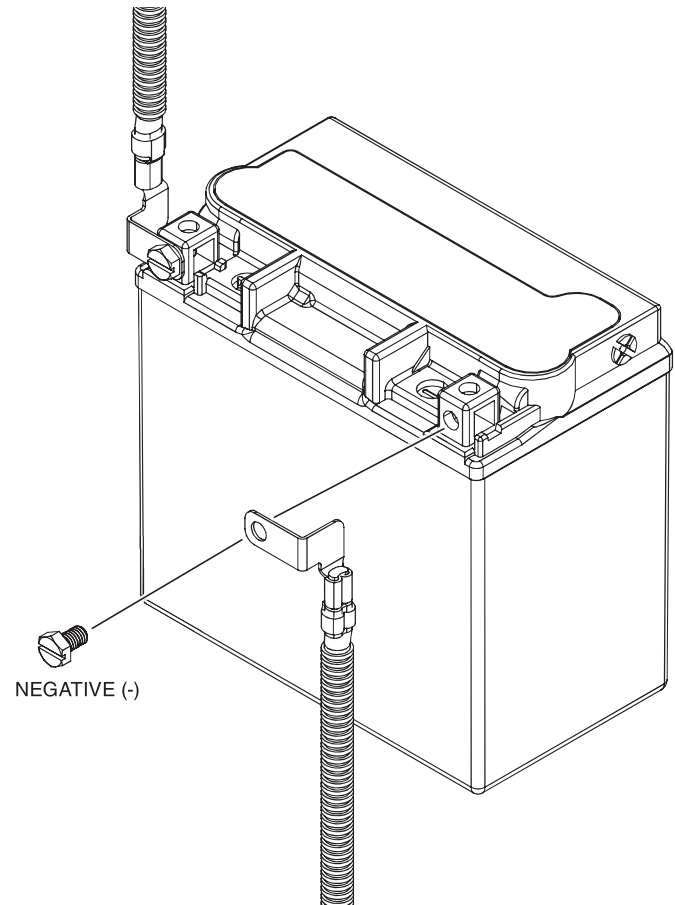


ALL APPLICATIONS:

26. Reinstall the busbar cap and cap screw.



27. Reconnect the negative terminal from the battery.



28. Install the hood in the reverse order of removal.