

# Mill Creek Off-Highway Vehicle Trail

Ozark-St. Francis National Forests

*Boston Mountain Ranger District*



U.S. Forest Service Southern Region

Arkansas

January 2012

## Trail Highlights:

This trail leads the rider through remote areas of the Ozark National Forest and features challenging mountainous terrain through lush upland hardwood forest with unique rock outcrops, clear mountain streams, and spectacular scenic views. The main trail and inside loops are connected to accommodate riders who want to vary the length of their trips.

The trail tread is gravel or unsurfaced and follows the rough and rocky terrain. Trail difficulty varies from easy to very difficult. The outer trail "Blue Loop" is 27 miles long, with inner short-cuts, warm-up loop and Burrell Mountain "Orange Loop" all totaling 42 miles of riding opportunity.

## Safety:

- Wear proper safety gear.
- Maintain a safe speed.
- Stay alert. Expect the unexpected.
- No passengers on a single-rider vehicle.
- Be aware that water can rise very quickly at stream crossings during and after heavy rains.

## Surrounding Area Services:

Groceries, gasoline, ice and other supplies are available on State Hwy 16 in Combs or east to St. Paul or south to Turner Bend on State Hwy 23.

**White Rock Mountain Recreation Area-**Facilities include: cabins, lodge, camping and picnicking. For information call 479-369-4128.

**Shores Lake Recreation Area-**Facilities include: an 82-acre lake, swimming, fishing, camping, picnicking, hiking, toilets with showers.

**Location:** 27302 Mill Creek Road, Elkins, AR 72727

- From Fayetteville, AR, take State Hwy 16 east to Combs, turn south on Madison County Road 4275/Forest Service Road (FSR) 1007 travel 4 miles and turn left on Mill Creek Road/FSR 1509 travel 0.5 miles to the trailhead.
- From Ozark, take State Hwy 23 north to Cass, turn west on Fanes Creek Road/FSR 1520 travel 8 miles to Mill Creek Road/FSR 1509, then travel north 4 miles to the trailhead.

## For more information, contact:

Boston Mountain Ranger District  
1803 N 18th Street  
Ozark, AR 72949 (479) 667-2191

## Facilities:

- Gravel parking area.
- Vault toilet.
- Loading ramp.
- Information board & self-service pay station.

**Fees:** \$3 Day-Use Fee Required. Fee information and instructions are posted at the trailhead and self-service pay station.

**Requirements:** No camping at the trailhead. State laws regarding equipment, spark arresters and mufflers are enforced. Off-Highway Vehicles (OHVs) are not permitted in developed recreation areas such as White Rock Mountain and Shores Lake.

**Recommendations:** Check weather forecasts, take a map or GPS unit, drinking water, First Aid Kit, and fire extinguisher. Stay on the marked trail and don't cross cut trails or trespass on private property.

The U.S. Department of Agriculture (USDA) prohibits discrimination in all its programs and activities on the basis of race, color, national origin, age, disability, and where applicable, sex, marital status, familial status, parental status, religion, sexual orientation, genetic information, political beliefs, reprisal, or because all or a part of an individual's income is derived from any public assistance program. (Not all prohibited bases apply to all programs.) Persons with disabilities who require alternative means for communication of program information (Braille, large print, audiotape, etc.) should contact USDA's TARGET Center at (202) 720-2600 (voice and TDD). To file a complaint of discrimination write to USDA, Director, Office of Civil Rights, 1400 Independence Avenue, S.W., Washington, D.C. 20250-9410 or call (800) 795-3272 (voice) or (202) 720-6382 (TDD). USDA is an equal opportunity provider and employer.

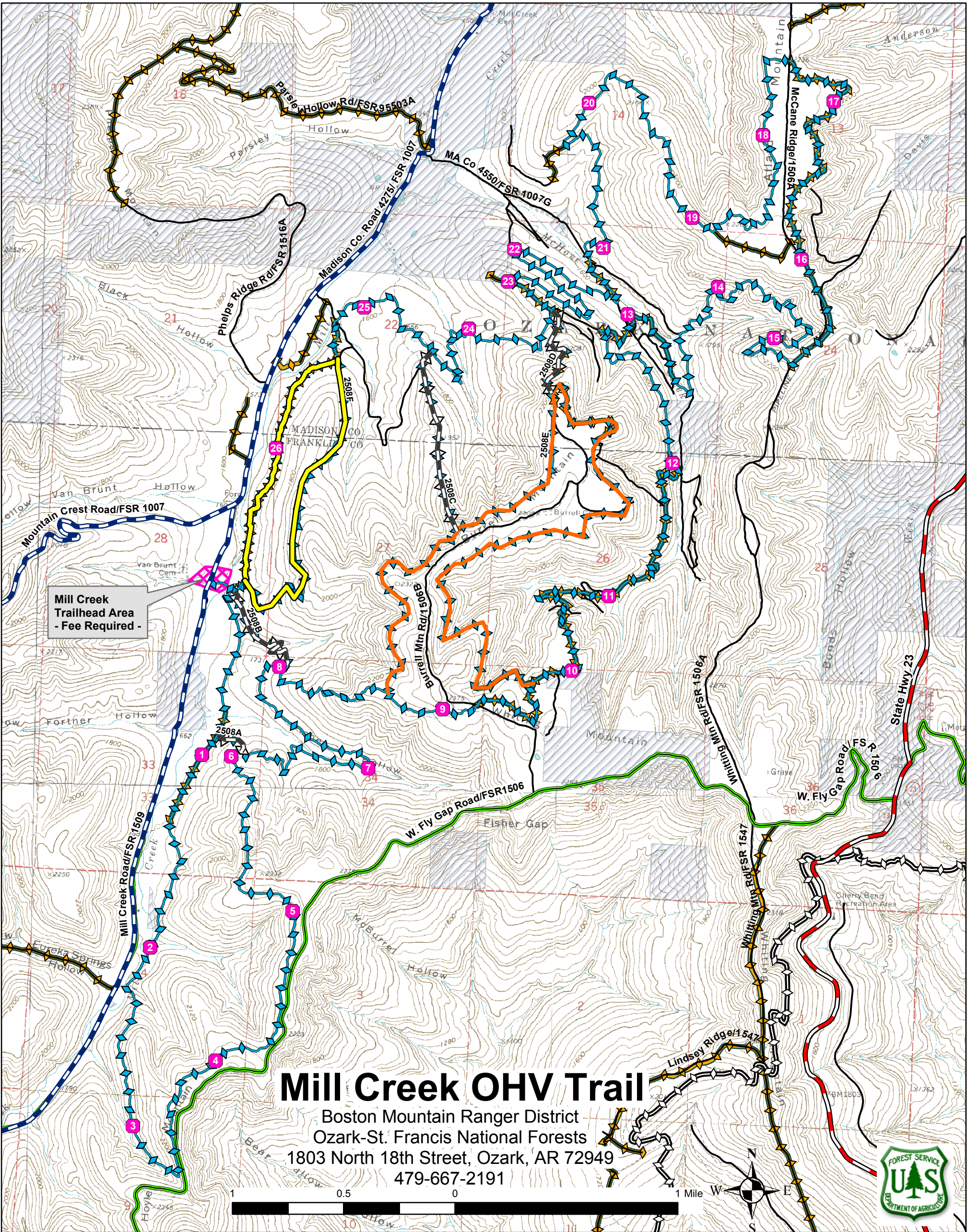
**Ozark-St. Francis National Forests** [www.aokforests.com](http://www.aokforests.com)

605 W. Main Street, Russellville, AR 72801  
(479) 964-7200



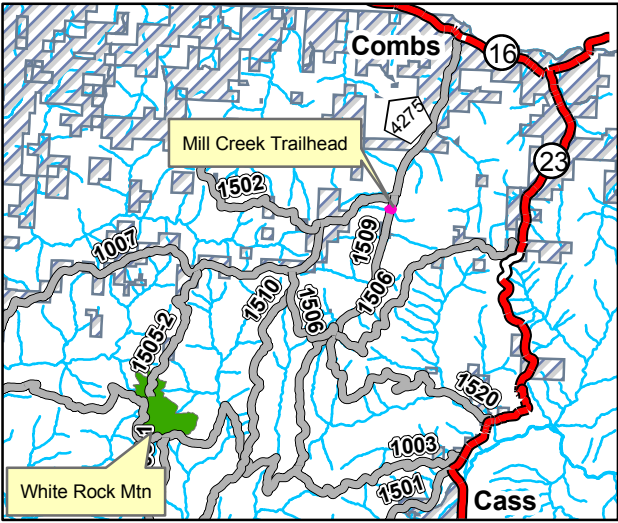
U.S. Department of Agriculture  
Forest Service  
Southern Region





Legend

- Mill Creek Trailhead Area
- Mill Creek Trail "Blue Loop" - 27 miles
- Mill Creek Shortcuts - 2508A, B, C, etc.
- Mill Creek - Burrell Mountain Loop 2508E
- Mill Creek - Warmup Loop 2508F
- Mile Posts
- Ozark Highland Trail
- County Roads
- Open Forest Roads
  - 2 - HIGH CLEARANCE VEHICLES
  - 3 - SUITABLE FOR PASSENGER CARS
- Roads Open for OHVs
- Private Property

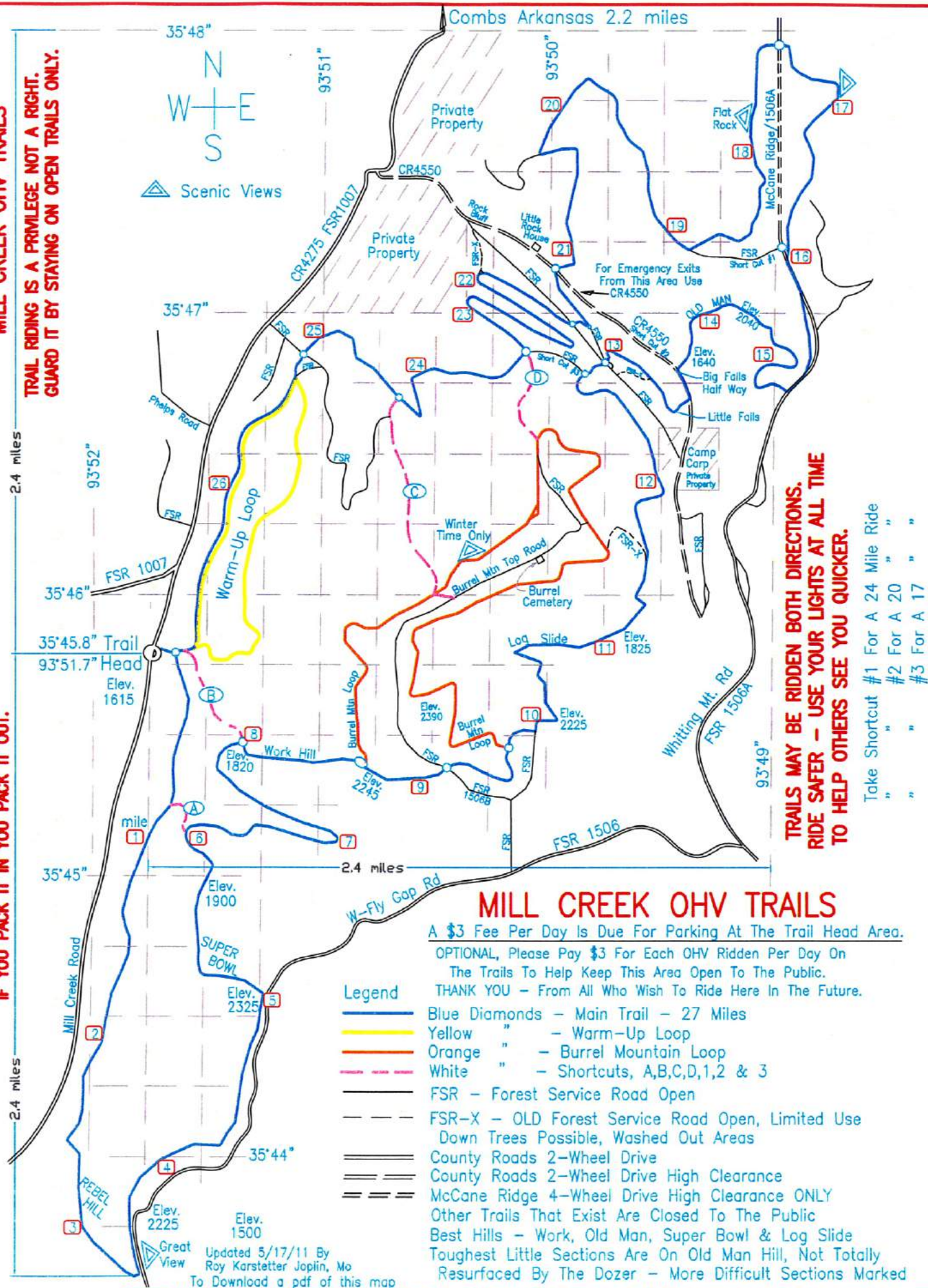


"The USDA is an equal opportunity provider and employer."



**IF YOU PACK IT IN YOU PACK IT OUT.**

**TRAIL RIDING IS A PRIVILEGE NOT A RIGHT.  
GUARD IT BY STAYING ON OPEN TRAILS ONLY.**



# MILL CREEK OHV TRAILS

A \$3 Fee Per Day Is Due For Parking At The Trail Head Area.

OPTIONAL, Please Pay \$3 For Each OHV Ridden Per Day On  
The Trails To Help Keep This Area Open To The Public.

THANK YOU - From All Who Wish To Ride Here In The Future.

### Legend

-  Blue Diamonds – Main Trail – 27 Miles  
 Yellow " – Warm-Up Loop  
 Orange " – Burrell Mountain Loop  
 White " – Shortcuts, A,B,C,D,1,2 & 3  
 FSR – Forest Service Road Open  
 FSR-X – OLD Forest Service Road Open, Limited Use  
 Down Trees Possible, Washed Out Areas  
 County Roads 2-Wheel Drive  
 County Roads 2-Wheel Drive High Clearance  
 McCane Ridge 4-Wheel Drive High Clearance ONLY  
 Other Trails That Exist Are Closed To The Public  
 Best Hills – Work, Old Man, Super Bowl & Log Slide  
 Toughest Little Sections Are On Old Man Hill, Not Total  
 Resurfaced By The Dozer – More Difficult Sections M

TRAILS MAY BE RIDDEN BOTH DIRECTIONS.  
RIDE SAFER - USE YOUR LIGHTS AT ALL TIME  
TO HELP OTHERS SEE YOU QUICKER.

Take	Shortcut	#1	For A	24	Mile	Ride
33	"	#2	For A	20	"	"
22	"	#3	For A	17	"	"

Great View Updated 5/17/11 By  
Roy Karstetter Joplin, Mo  
To Download a pdf of this map

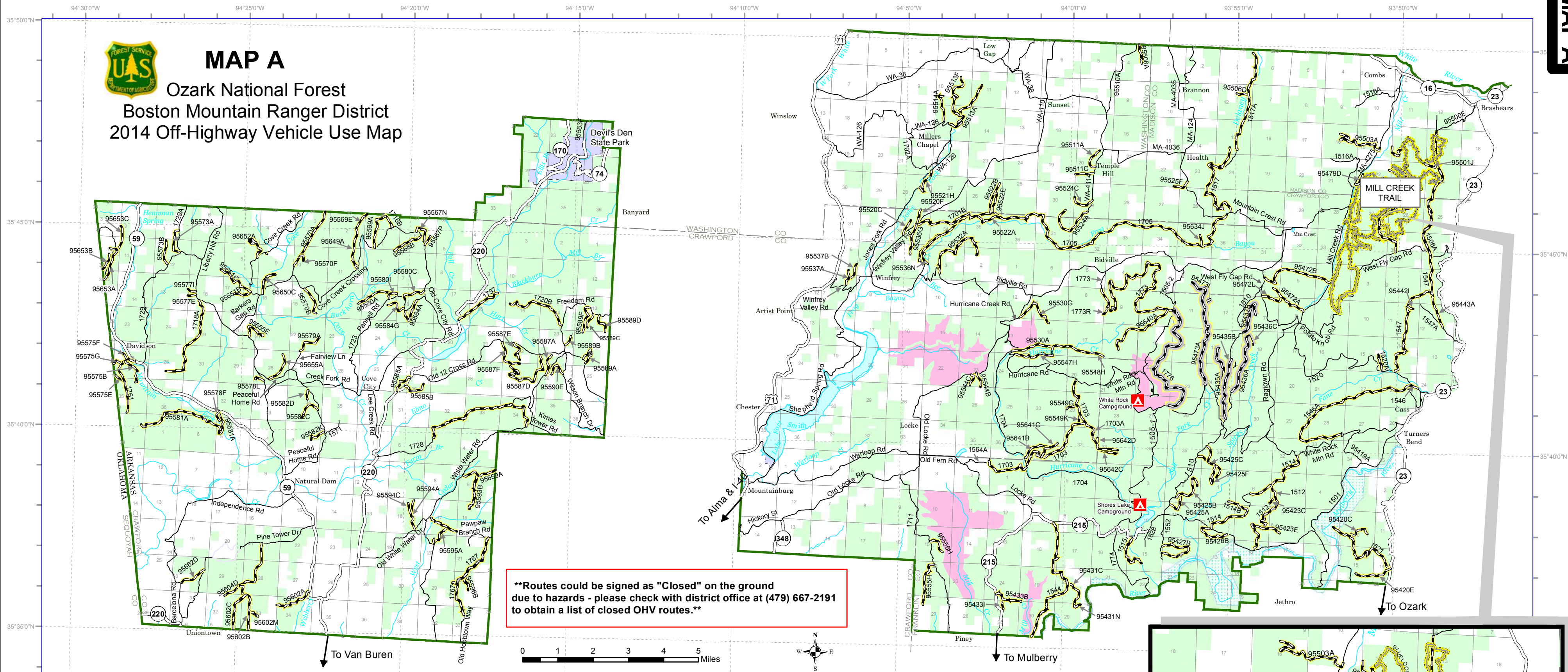
Search for thundermountainstv by Robert Blake. If unable to find it email, rapid13@fastfreedom.net and I will send you one.



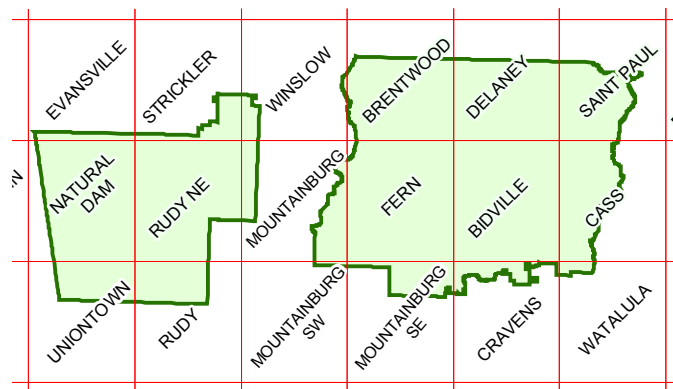


# MAP A

Ozark National Forest  
Boston Mountain Ranger District  
2014 Off-Highway Vehicle Use Map



## INDEX TO TOPOGRAPHIC MAPS

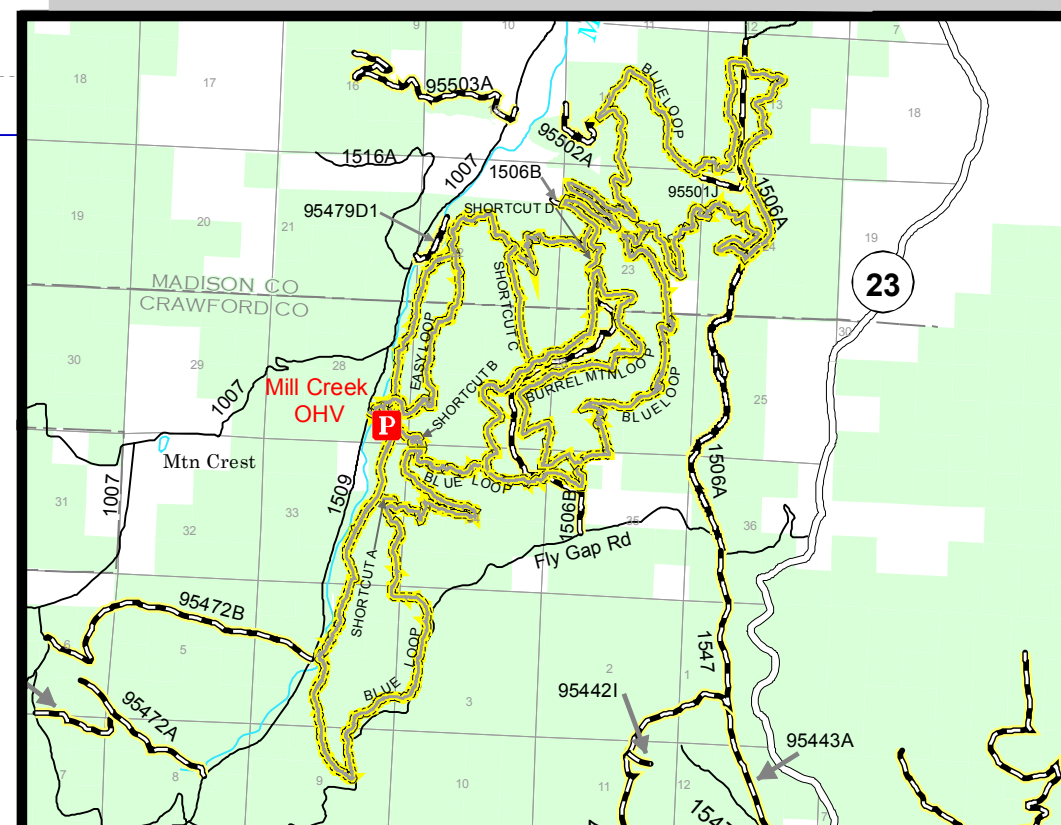


Topographic maps are available from the Branch of Distribution  
U.S. Geological Survey, Box 25286, Denver Federal Center, Denver, CO 80225  
or  
www.usgs.gov

- Roads Open to All Vehicles
- Seasonal Roads Open to All Vehicles  
(Check with local district office for closure dates.)
- Seasonal Roads Open to Highway Legal Vehicles Only  
(Check with local district office for closure dates.)
- Trails Open to Off Highway Vehicles Only

Mill Creek Trail area is a FEE Use area

- National Forest Boundary
- County Boundary
- State Highway
- Roads
- Streams
- Ozark National Forest
- Special Interest Areas
- Wild and Scenic River Corridor
- Forest Service Campgrounds
- Parking Area
- ROUTE MARKERS**
- Interstate
- U.S.
- State
- County
- National Forest







## MAP B

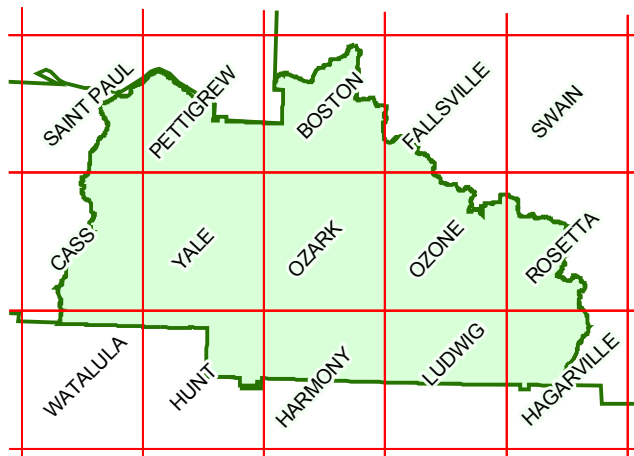
### Ozark National Forest Pleasant Hill Ranger District 2014 Off-Highway Vehicle Use Map

- Roads Open to All Vehicles
- Seasonal Roads Open to All Vehicles  
(Check with local district office for closure dates.)
- Roads Open to ATV

- National Forest Boundary
  - County Boundary
  - State Highway
  - Roads
  - Streams
  - Ozark National Forest
  - Special Interest Areas
  - Wild and Scenic River Corridor
- Forest Service Campgrounds
  - ROUTE MARKERS
  - Interstate
  - U.S.
  - State
  - County
  - 1120 National Forest



#### INDEX TO TOPOGRAPHIC MAPS



Topographic maps are available from the Branch of Distribution  
U.S. Geological Survey, Box 25286, Denver Federal Center, Denver, CO 80225  
or  
[www.usgs.gov](http://www.usgs.gov)

